



## INSTALLATION / OPERATOR MANUAL

### 3081 SERIES Atlas & Saddle Lifters

Mobile Units

#3081-MT-1000/3000/5000

Stationary Units

#3081-ST-1000/3000/5000



PROUDLY MADE IN DUBLIN, VIRGINIA USA



APPALACHIAN MACHINE INC | 5304 Laboratory Street | Dublin, VA 24084

Phone: (540) 674-1914 | [info@appalachianmachine.com](mailto:info@appalachianmachine.com) | [www.appalachianmachine.com](http://www.appalachianmachine.com)



## FOREWORD

This manual has been prepared so that the owner, maintenance personnel and operator may readily have available information and instruction pertaining to the installation, maintenance, repair and safe operation of the System.

The extra care in design, quality and manufacture of the System warrants the attention of all concerned. The additional personal attention and cost to provide regular inspection and maintenance will be reimbursed many times over in long-term trouble-free operation.

Maintenance personnel are urged to study this manual, so that a complete understanding of the system's operating principles, trouble-shooting techniques and maintenance methods may be accomplished.

Since units vary, the installation instructions presented in this manual have been generalized. Some deviations from the instructions might be required to complete the unit installation.



## CUSTOMER SERVICE POLICY

### LIFTERS

INSTALLATION: Appalachian Machine Inc. can install the lift unit at your location. Please call for quote.

QUESTIONS: If you are installing the lift unit and have question, please call Customer Service.

PARTS: Appalachian Machine Inc. stocks parts at our plant in Dublin, VA. Parts are shipped one to two business days after order. Emergency part service ships by UPS Next Day if ordered before 2PM EST, Monday – Friday.

PRICES: Call Customer Service.

TERMS: Net 30 days.

ORDER REQUIREMENTS: Minimum \$35 per order.

WARRANTY: All warranties (parts & labor) and returns must have a Return Material Authorization number (RMA#). Call Customer Service for approval and RMA#.

### Customer Service Center

Monday – Friday 7AM-3PM EST

(540) 674-1914

[info@appalachianmachine.com](mailto:info@appalachianmachine.com)



## SAFETY INSTRUCTIONS

### 3081 SERIES LIFTERS

1. No one should operate the lifter without first reading the manual and receiving hands-on training on the unit.
2. The power unit is controlled by a key lock for added safety. Access keys should be controlled by the plant or building safety manager and limited to trained operators.  
**NEVER leave the key in the lock when not operating.**
3. No one should climb, sit or **RIDE** on the lifter.
4. All personnel must stand clear (10 feet away) during the complete lift cycle. The operator must have a clear view of the lifter throughout the lift cycle, up and down.
5. **NEVER** stand under the lift unit when it is operating or in the up position.
6. **NEVER** clean under the lift unit when it is in the up position.
7. **NEVER** leave the unit up in the dumped position.
8. The power unit is designed with safety in mind and is operated by key lock and hydraulic hand valve. No modifications should be made to these controls.
9. Dump only authorized Toter Carts that are in good repair. **DO NOT** dump other carts.  
**DO NOT** dump Toter Carts that are cracked, broken, have bent stop bars or missing parts.
10. **DO NOT** modify this lifter to handle other carts.
11. **DO NOT** dump a cart that is over-filled (above the lip of the cart) or overloaded (above the maximum weight printed on the cart or lid). MAXIMUM LOAD for this lifter is 2,500 LBS for double motor; 1,500 LBS for single motor.
12. **DO NOT** dump carts containing hazardous waste (per EPA listings), flammable liquids or explosive materials.
13. Wear eye protection when operating.
14. Keep hands clear of operating lift unit. Follow US OSHA lockout and tagout procedures prior to maintaining or repairing the unit.
15. Ensure that the lids of any carts that are latched, locked, or chained shut are fully opened before dumping.





## DESCRIPTION

### 3081 SERIES MT/ST-1000, 3000 & 5000 Atlas Lifters

These hydraulic powered lift units are designed to safely and quickly dump Toter Atlas containers into hoppers, compactors and conveyers to a height of 84" above the floor. The unit has a lifting pan that the container is locked in place on while being dumped by two sliding/locking hooks that engage the handles of the container.

The 'MT' model lift unit is battery powered and can be moved away from the hopper or moved to different hoppers. The unit is designed to go through a standard 36" door opening.

The 'ST' model is a stationary unit that is AC powered.



## OPERATION INSTRUCTIONS

### 3081 SERIES MT/ST-1000, 3000 & 5000

### Atlas Lifter

1. Place Atlas container on the lifting pan the unit.
2. Place container locks over handles of Atlas container by the following:
  - a. Press down on the release tap of the handle lock
  - b. Slide lock down and engage the handle of the Atlas container with the locking angle. Lock both handles of the container in place.
3. After container is locked to the lifting pan, push the **UP** button on control panel and dump container.
4. After container is dumped, push the **DOWN** button on control panel and lower container to the floor.
5. Press down on the release tap of the handle lock and slide handle lock up until the lock clears the container handle.
6. After container is unlocked from the pan remove Atlas container from lifting pan.

**CAUTION: DO NOT OPERATE THE LIFTER WITHOUT A CONTAINER ON THE LIFTING PAN**



## OPERATION INSTRUCTIONS

### 3081 SERIES MT-5000

1. Push lift unit to the location that two-wheel or caster carts are to be dumped.
2. Lock front castors on the lift unit.
3. Place cart on lifter saddle with lid open.  
**WARNING: NEVER DUMP CARTS WITH LID ON!**
4. Be sure no one is within 6' of area behind lift unit when cart is dumped.
5. Be sure front castors are locked.
6. Push top button on the lift unit control switch and dump cart.
7. After cart contents have been dumped, push bottom button and lower cart.
8. Remove cart from lift unit.

**CAUTION: DO NOT OPERATE THE LIFTER WITHOUT A CONTAINER ON THE LIFTING PAN**

### CHARGING BATTERY

Unit is supplied with a battery charger that will not over-charge the battery. We recommend that the battery charger be plugged into a 115-volt outlet continuously. This will ensure that the battery is fully charged when being used. If it is not possible to have the charger continuously plugged in, move unit to outlet and plug charger in when not in use.

**NOTE: If battery is drained all the way down, it will take charger approximately 12 hours to fully re-charge.**

**IMPORTANT: BATTERY FLUID LEVELS MUST BE CHECKED AT LEAST EVERY 30 DAYS  
– FAILURE TO MAINTAIN BATTERY MAINTENANCE MAY VOID WARRANTY**

Battery Box Part - # 3063-MT-6091

6-Volt Battery Part - # 3063-MT-6090



## CHARGER OPERATION

### MRC Series – 20 AMP CHARGER

**Models:** MRC12-5LX, MRC24-3LX, MRC12-10LX, MRC24-5LX, MRC36-3LX

**Charger Operation:** With a discharged battery, full power is given to battery until the Green light turns on. When the Green light turns on the battery is fully charged and the battery voltage is at full charge. The battery voltage will slowly go down in 2-hour period to a float voltage. In this float level mode (maintenance), the charger can be left on indefinitely.

**LED Operation:**

Red LED – Charger on and connected to 120 VAC

Green LED – Indicates battery is charged to 100%. Green LED turns off immediately after removing 120 VAC power. On a fully charged battery, the LED turns on almost immediately. With no battery connected LED will turn on immediately.

Reversing Indication – or Short Indication – If the Green LED turns on and Red LED is off, either the charger is reversed connected or the charger is seeing very low battery voltage (less than 4 volts) and will not start charging.

**OPERATING INSTRUCTIONS:**

***Before proceeding to charge battery, make sure you read all provided safety instructions.***

1. Only charge right voltage lead-acid batteries with charger.
2. Make sure the charger is disconnected from the 120 VAC.
3. First, connect charger to batteries (check polarity).
4. After connecting charger to battery connect charger to 120 VAC.
5. If after 24 hours the Green LED is not on, disconnect charger from battery.  
Check batteries. If good, replace charger.

***IMPORTANT SAFETY INSTRUCTIONS***

BEFORE USING BATTERY CHARGER, READ ALL INSTRUCTIONS AND CAUTIONARY MARKINGS ON

1. BATTERY CHARGER
2. BATTERY
3. PRODUCT USING BATTERY

APPALACHIAN MACHINE INC | 5304 Laboratory Street | Dublin, VA 24084

Phone: (540) 674-1914 | [info@appalachianmachine.com](mailto:info@appalachianmachine.com) | [www.appalachianmachine.com](http://www.appalachianmachine.com)



## SLIM CHARGER – 10 AMP

### 3063-MT-6036

(Superseded by MRC SERIES 20 Amp Charger above)

How does the SLIM CHARGER work and how is it different from other chargers?

#### Description

The SLIM CHARGER is a state-of-the-art lead acid battery charger that makes all other chargers obsolete. The SLIM CHARGER will fully-charge lead acid batteries overnight. When the battery is fully-charged, the SLIM CHARGER automatically reduces the charge rate to 30 mAmps to prevent over-charging.

Charging a battery is more than putting a charger on a battery at night and taking it off in the morning. To properly charge a battery, the charger has to be capable of taking a battery through three charge stages. The first stage is a bulk charge stage in which the charger supplies a majority of the power to the battery, until it reaches termination voltage. During the second stage the termination voltage has to be high enough to fully charge the battery and remain at that constant termination voltage for an hour to de-stratify the electrolyte and return it to a set level of specific gravity. Finally, in the third stage the charger goes into stand-by mode that keeps a battery fully-charged without over-charge. The SLIM CHARGER goes through three stages and automatically reduces the charge to 30 mAmps in the third stage, a rate too low to cook or over-charge the battery.

#### Specification

Model #	Output Voltage	Float Voltage	Output Current	Size
MRC12-10-AG	14.5 VDC	13.2 VDC	10 AMPS	2"H x 8.5"L x 3.6"W
Connections	6' AC cord – 6' DC output cord			
Batteries	Liquid lead acid, absorbed electrolyte or gel cell			
Red LED	Indicates the charger is charging			
Green LED	Indicates the battery is 100% charged and in Stand-By Mode			



## MOBILE LIFT MAINTENANCE INSTRUCTIONS

### 3081 SERIES MT 1000, 3000 & 5000

#### Daily

1. Charge Battery
2. Check operation of front locking caster  
(Units without Auto Lock)

#### Weekly

1. Check oil level - power unit
2. Check water level – battery
3. Check for oil leaks
4. Check tightness of foot pads  
(Units without Auto Lock)
5. Check battery post for corrosion

#### Monthly

1. Grease all grease fittings
2. Check color of oil, if milky color, replace

#### Battery Maintenance

Your battery will last longer if you keep it charged and maintain proper water level. It is best to use distilled water if you have to add water to the battery. If you have to replace the battery you must purchase a deep cycle battery. To find a local dealer look online. Toter does not ship replacement batteries.



## TROUBLESHOOTING

### 12 Volt Mobile Lift Units

MOTOR WILL NOT RUN	<ol style="list-style-type: none"> <li>1. Check battery charger (green light = FULL charge)</li> <li>2. Check battery cables for corrosion</li> <li>3. If battery won't charge, REPLACE BATTERY</li> <li>4. If battery is OK, REPLACE SOLENOID</li> <li>5. Check power to hand set</li> <li>6. If all above OK, REPLACE MOTOR</li> </ol>
MOTOR WILL RUN, BUT WILL NOT OPERATE UP OR DOWN	<ol style="list-style-type: none"> <li>1. Check oil level</li> <li>2. Check oil pressure – IF NO PRESSURE:               <ol style="list-style-type: none"> <li>a. Check pump coupling</li> <li>b. REPLACE PUMP</li> </ol> </li> <li>3. Check wire connections to valve coils</li> </ol>
LIFT UNIT WILL NOT LIFT LOAD OR IS VERY SLOW	<ol style="list-style-type: none"> <li>1. Check oil pressure</li> <li>2. Check actuator or cylinder for excessive oil by-pass (REPLACE SEALS)</li> <li>3. REPLACE PUMP</li> </ol>
LIFT UNIT WILL NOT OPERATE IN BOTH DIRECTIONS	<ol style="list-style-type: none"> <li>1. Check valve coil manually when unit is running. If valve can be operated manually: REPLACE COIL</li> <li>2. Check wires to coil</li> <li>3. Check hand set</li> </ol>



## WARNING

BEFORE ANY INSTALLATION ANY STATIONARY (ST) UNIT:

Voltage from the electrical disconnect to the motor starter has to be verified as the same stated on the voltage label on the motor starter control box.

FAILURE TO SUPPLY ANY VOLTAGE TO THE MOTOR STARTER THAT IS NOT THE SAME AS THE VOLTAGE STATED ON THE MOTOR STARTER WILL VOID ALL WARRANTIES.

GREASING IS REQUIRED FOR PROPER MAINTENANCE OF CERTAIN PARTS.





## INSTALLATION INSTRUCTIONS

### 3081 SERIES ST 1000, 3000 & 5000

1. Center lifter in front of hopper or compactor that unit will dump into as close as possible.
2. Drill hole for 5/8" concrete anchors or bolts for the two front mounting holes of lifter.
3. Connect power supply from disconnect to motor starter of lifter.
4. For power units mounted to lifter remove shipping plug from power unit's oil fill and check oil level of power unit ½" below fill hole and replace plug with supplied breather cap.
5. For stand mounted power unit fill oil reservoir with a W46 hydraulic oil to full level on sight gauge of power unit.
6. Turn power unit on and check rotation of motor (SEE ARROW) on motor. Note: Unit will not lift if rotation is wrong. If wrong, change wiring to motor starter.
7. Raise pan up to dump position and check clearance of pan dumping into hopper or compactor. If correct, mount remaining anchors or bolts into mounting holes.
8. If unit is supplied with safety cage, mount in place.
9. Check all valves and hose fittings for leaks.
10. Dump all carts or containers that are to be used with lifter to be sure they are dumped correctly.
11. Instruct operators how to use lifter.

#### **WARNING:**

- i. **Unit must be anchored to floor, pad or deck in all places FAILURE to do so will void all lift unit and truck warranties.**
- ii. **Do not attempt to mount on asphalt or dirt.**



## MOTOR STARTER PARTS LIST

### Cutler-Hammer Single Phase

	<u>PART NUMBER</u>	<u>DESCRIPTION</u>
1	5354-MS-1120	120 Volt Motor Starter
2	5354-MS-1220	220 Volt Motor Starter
3	5354-MS-1121	Replacement Starter 120 Volt
4	5354-MS-1222	Replacement Starter 220 Volt
5	5354-MS-3020	Key Switch
6	5354-MS-3021	Contact Block
7	5354-MS-3012	Heater

**NOTE: WHEN ORDERING REPLACEMENT HEATERS PLEASE SUPPLY MOTOR HORSEPOWER AND VOLTAGE INFORMATION**



**PARTS LIST**  
**3081-MT-1000**  
**ATLAS MOBILE LIFT**

<u>ITEM</u>	<u>PART NUMBER</u>	<u>DESCRIPTION</u>
1	3081-00-0120	Frame
2	3081-00-0121	Main Arm Weldment
3	3081-00-0122	Pivot Weldment
4	3063-MT-6091	Battery Box
5	5250-00-0463	Hex Screw 3/16" – 16 x 3.5"
6	5250-00-0424	Hex Screw 3/8" – 16 x 1.5"
7	5250-00-0416	Hex Screw 3/8" – 16 x 1"
8	5250-00-0410	Hex Screw 3/8" – 16 x 3/4"
9	5590-00-0302	SHO Screw 5/16"- 18 x 2"
10	5250-00-0212	Hex Screw 1/4" – 20 x 3/4"
11	5589-00-0050	Button Screw #10 – 32 x 1/2"
12	5250-00-0221	Hex Screw 1/4" – 20 x 1-3/4"
13	5250-00-0400	Hex Screw 3/8" – 16
14	5260-00-0200	Hex Nut 1/4" – 20

APPALACHIAN MACHINE INC | 5304 Laboratory Street | Dublin, VA 24084

Phone: (540) 674-1914 | [info@appalachianmachine.com](mailto:info@appalachianmachine.com) | [www.appalachianmachine.com](http://www.appalachianmachine.com)

15	5260-00-0200	Hex Nut ¼" – 20
16	5440-00-0400	Lock Washer 3/8"
17	5440-00-0200	Lock Washer 1/4"
18	5440-00-0100	Lock Washer #10
19	5440-00-0200	Lock Washer 1/4"
20	3081-00-0101	Oilite Bushing
21	5435-00-0200	Grease Fitting
22	3081-00-0107	Swivel Caster 4"
23	3081-00-0108	Rigid Caster
24	3081-00-0109	Spring
25	3069-MT-6090	Battery
26	3072-00-2001	Cylinder
27	3063-MT-6041	Battery Disconnect
28	3042-00-2022	Hand Control Set
29	3042-00-2000	Fenner Power Unit
30	3063-MT-6036	Battery Charger
31	3081-00-0123	Motor Cover
32	3081-00-0124	Can Holder Upper
33	3081-00-0125	Can Holder Lower



PARTS CHANGE  
3081-00-1000 Atlas Lift Units

Note: June 2003 We changed the 3081-00-1000 Atlas Lift Units Can Holder; parts # for the new holder are:

3081-00-1026		Can Holder Tube
3081-00-1027		Can Holder Slide Lock



**PARTS LIST**  
**FENNER POWER UNIT 12 Volt**  
**3042-00-2000**

<u>ITEM</u>	<u>PART NUMBER</u>	<u>DESCRIPTION</u>
1	3042-00-2020	Solenoid Starter
2	3042-00-2004	Motor 12 Volt
3	3042-00-2050	Valve Plug
4	3042-00-2051	SAE Plug
5	3042-00-2005	Reservoir O-Ring
6	3042-00-2052	Motor Coupling
7	3042-00-2053	Pump O-Ring Kit
8	3042-00-2054	Plumbing Kit
9	3042-00-2055	Filter
10	3042-00-2010	Pump
11	3042-00-2056	Pump Mounting Bolt
12	3042-00-2057	Reservoir
13	3042-00-2058	Reservoir Screw
14	3042-00-2014	Filler Breather

APPALACHIAN MACHINE INC | 5304 Laboratory Street | Dublin, VA 24084

Phone: (540) 674-1914 | [info@appalachianmachine.com](mailto:info@appalachianmachine.com) | [www.appalachianmachine.com](http://www.appalachianmachine.com)

15		3042-00-2059	Relief Valve Assembly
16		3042-00-2060	Plug
17		N/A	
18		3042-00-2061	Bolt
19		N/A	
20		N/A	



## PARTS LIST

### 5354-F3-3003 & F1-3001 POWER UNIT

ITEM	PART NUMBER	DESCRIPTION
1	5354-FE-3010	Reservoir O-Ring
2	5354-FE-3011	Pump
3	5354-FE-3012	Bolt
4	5354-FE-3013	Seal Kit
5	5354-F1-3002 5354-F3-3004	Motor Single Phase 2 HP Motor Three Phase 2 HP
6	5354-FE-3014	Bolt
7	5354-FE-3015	Motor Adaptor
8	5354-FE-3016	Coupling
9	5354-FE-3017	Reservoir
10	5354-FE-3018	Breather
11	5354-FE-3019	Plug
12	5354-FE-3020	Bolt
13	5354-FE-3021	Valve Plug
14	5354-FE-3022	Plug
15	5354-FE-3023	Relief Valve Kit
16	5354-FE-3024	Horizontal Pumping Kit
17	5354-FE-3025	Filter
18		Motor Starter





## PARTS LIST

### 3081-00-5000 SADDLE MOBILE LIFT

ITEM	PART NUMBER	DESCRIPTION
1	3081-MT-0200	Frame Weldment
2	3081-MT-0170	Lift Assembly
3	3081-MT-0300	Pivot Weldment
4	3081-MT-0320	Lock Hook
5	3063-MT-6091	Battery Box
6	3059-00-3900	Saddle
7	3081-MT-0405	Hook Spring Pin
8	5250-00-0463	Hex Screw 3/8" - 16 x 3-1/2"
9	5250-00-0424	Hex Screw 3/8" - 16 x 1-1/2"
10	5250-00-0416	Hex Screw 3/8" - 16 x 1"
11	5250-00-0320	Hex Screw 5/16" - 18 x 1-1/4"
12	5590-00-0234	1/4" - 20 x 3/4" SHCS
13	5250-00-0216	1/4" - 20 x 1" Hex Screw
14	5110-00-0020	Cotter Pin
15	5110-00-0200	Cotter Pin
16	5110-00-0300	5/16" - 18 Hex Nut
17	5260-00-0200	1/4" - 20 Hex Nut
18	5260-00-0200	1/4" - 20 Hex Nut
19	5500-00-0500	1/2" Flat Washer
20	5500-00-0500	1/2" Flat Washer
21	5440-00-0300	5-16" Lock Washer
22	5440-00-0200	1/4" Flat Washer
23	5440-00-0200	1/4" Flat Washer
24	5110-00-0032	Cotter Pin
25	5110-00-0016	Cotter Pin
26	3081-MT-0390	Cylinder Pin
27	3081-MT-0400	Hook Pin
28	3081-00-0101	Bearing
29	5435-00-0200	Grease Fitting
30	5500-00-0500	1/2" Flat Washer
31	5500-00-0910	1" Flat Washer
32	3081-MT-0400	Spring Pin
33	3081-00-0108	Rigid Caster
34	3081-00-0107	Swivel Caster
35	3081-00-0108	Spring
36	3081-00-0106	Cam Follower
37	3063-MT-6090	Battery
38	3072-00-2001	Cylinder

APPALACHIAN MACHINE INC | 5304 Laboratory Street | Dublin, VA 24084

Phone: (540) 674-1914 | [info@appalachianmachine.com](mailto:info@appalachianmachine.com) | [www.appalachianmachine.com](http://www.appalachianmachine.com)

39		3063-MT-6041	Disconnect w/Key
40		3063-MT-6044	Key
41		3063-MT-6045	Disconnect Key
43		3063-MT-6042	Legend Plate
44		3042-00-2022	Control Handset
45		3042-00-3000	Fenner Power Unit
46		3063-MT-6036	Battery Charger
47		3081-MT-0370	Hook Stop



## PARTS CHANGE

### 3081-00-5000 Atlas Lift Units

**Note:** On 6.1.2003 The Lock Hook Assembly was changed.  
Please refer to new parts list and drawing in this manual for parts.



**PARTS LIST**  
**3081-00-0500**  
**Lock Hook Assembly**

<u>ITEM</u>	<u>PART NUMBER</u>	<u>DESCRIPTION</u>
1	3081-00-0501	Lock Hook
2	3081-00-0502	Hook Pivot Bracket
3	3081-00-0503	Hook Rod
4	3081-00-0505	Spacer
5	3081-00-0504	Rod End
6	5590-00-0524	½" – 13 x 1-1/2" SHCS
7	5260-00-0520	½" – 20 Hex Nut
8	5250-00-0464	3/8" – 16 x 4" Hex Bolt
9	5440-00-0400	3/8" Lock Washer
10	5260-00-0400	3/8" Hex Nut



## PARTS LIST

### Lift Unit Hydraulic Valves

<u>PART NUMBER</u>	<u>DESCRIPTION</u>
5354-00-0614	1" Flow Regulator Valve (Diverter Valve)
5354-00-2500	Prince Hand Valve
5355-BK-0420	Break-a-way Kit
5354-00-0675	Break-a-way Kit Valve
5354-00-0676	

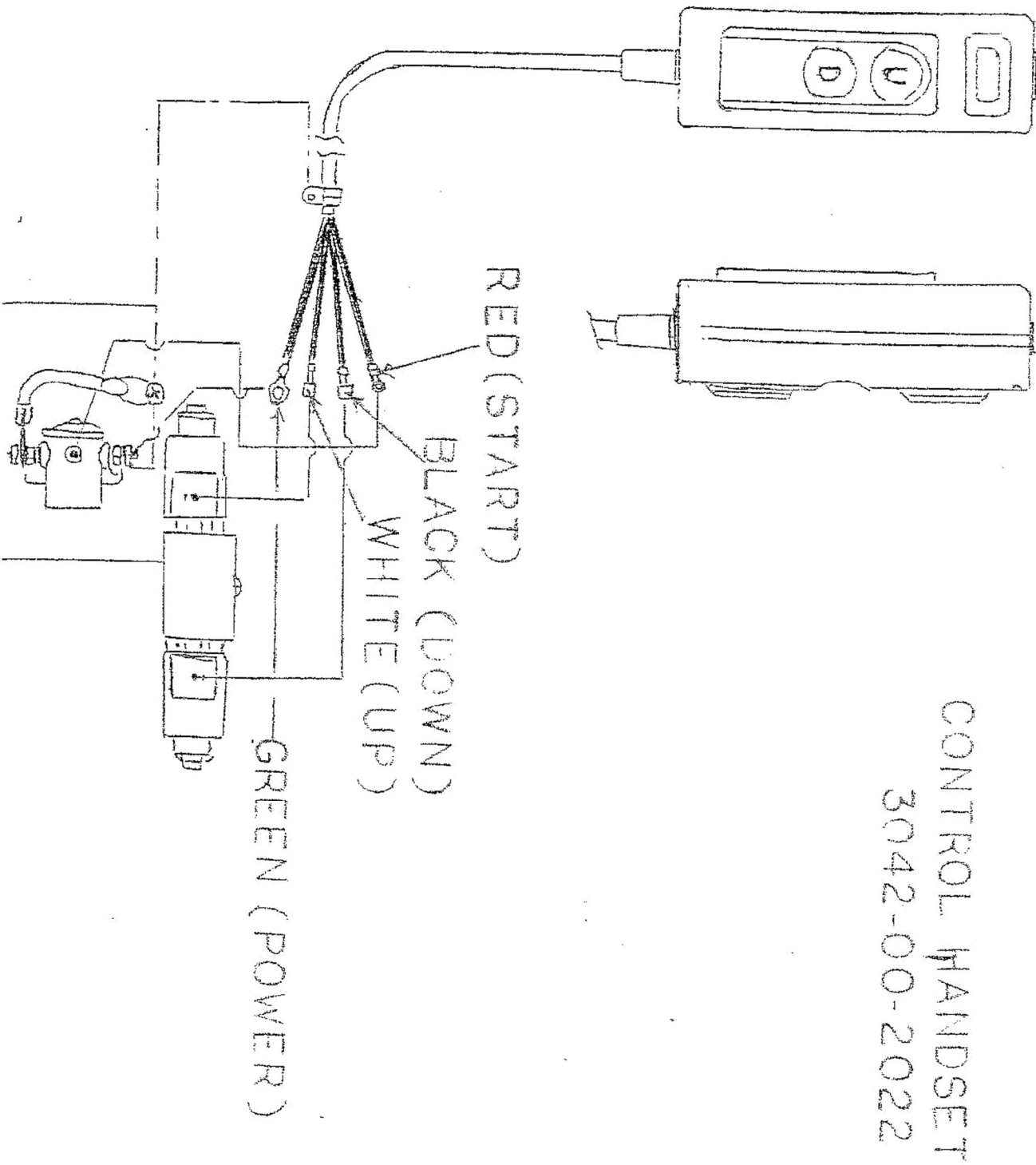
### Special Applications Hydraulic Valves

<u>PART NUMBER</u>	<u>DESCRIPTION</u>
5354-00-0612	¾" Flow Regulator Valve
5354-00-0620	3/8" Adjustable Control Valve
5354-00-0641	50/50 Flow Divider



## PARTS LIST HAND VALVE

<u>ITEM</u>	<u>PART NUMBER</u>	<u>DESCRIPTION</u>
1	5354-00-0430	Gresen Hand Valve
2	5354-00-0405	Centering Spring
3	5354-00-0407	Spool Seal (2)
4	5354-00-0408	Handle
5	5354-00-0418	Handle Bracket



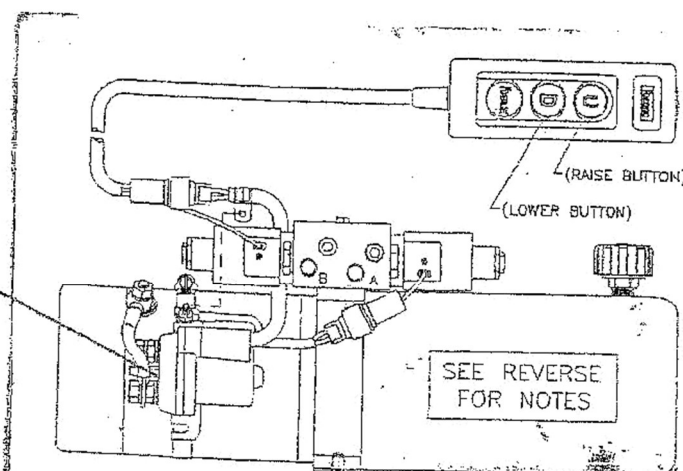
CONTROL HANDSET  
3042-00-2022

## FENNER 12VOLT POWER UNIT COILS

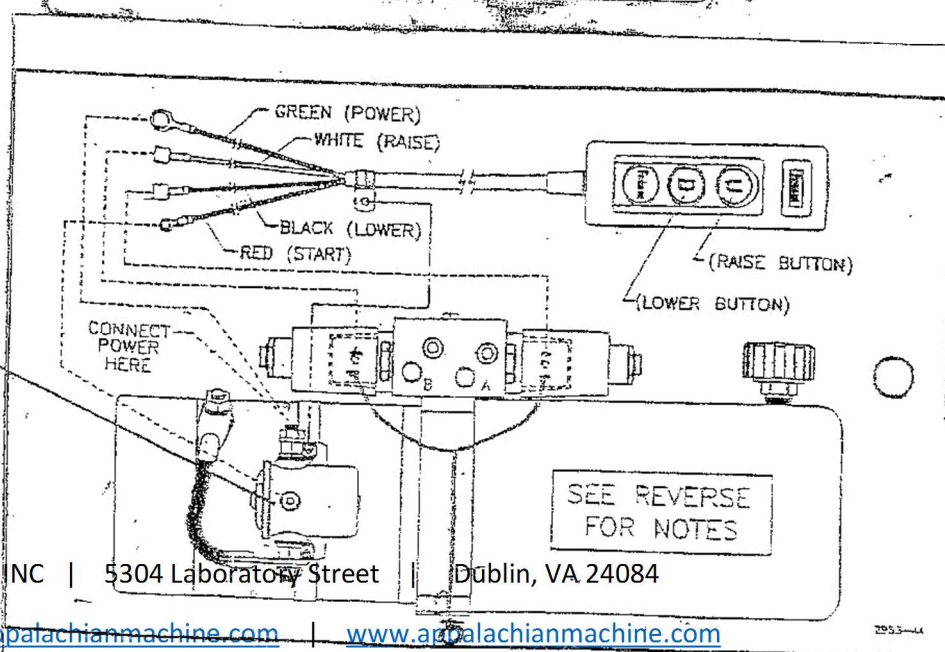
WE HAVE RECEIVED TWO DIFFERENT TYPES OF SOLENOID STARTER ASSY. FROM FENNER.

1. 3042-00-2001 THIS IS THE ASSEMBLY THAT IS SHOWN IN THE PARTS LIST AND THE CONNECTORS ARE SIDE MOUNTED. THIS IS WHAT WE NOW RECEIVE AND WHAT WE RECEIVED FOR ABOUT THE FIRST 10 UNITS WE SOLD.
2. 3042-00-2019 THIS ASSEMBLY HAS THE CONNECTORS ON THE FRONT OF THE STARTER ASSEMBLY.
3. BE SURE YOUR CUSTOMER ORDERS THE CORRECT STARTER ASSEMBLY FOR HIS UNIT PER THE DIAGRAMS BELOW.

3042-00-2019



3042-00-2001

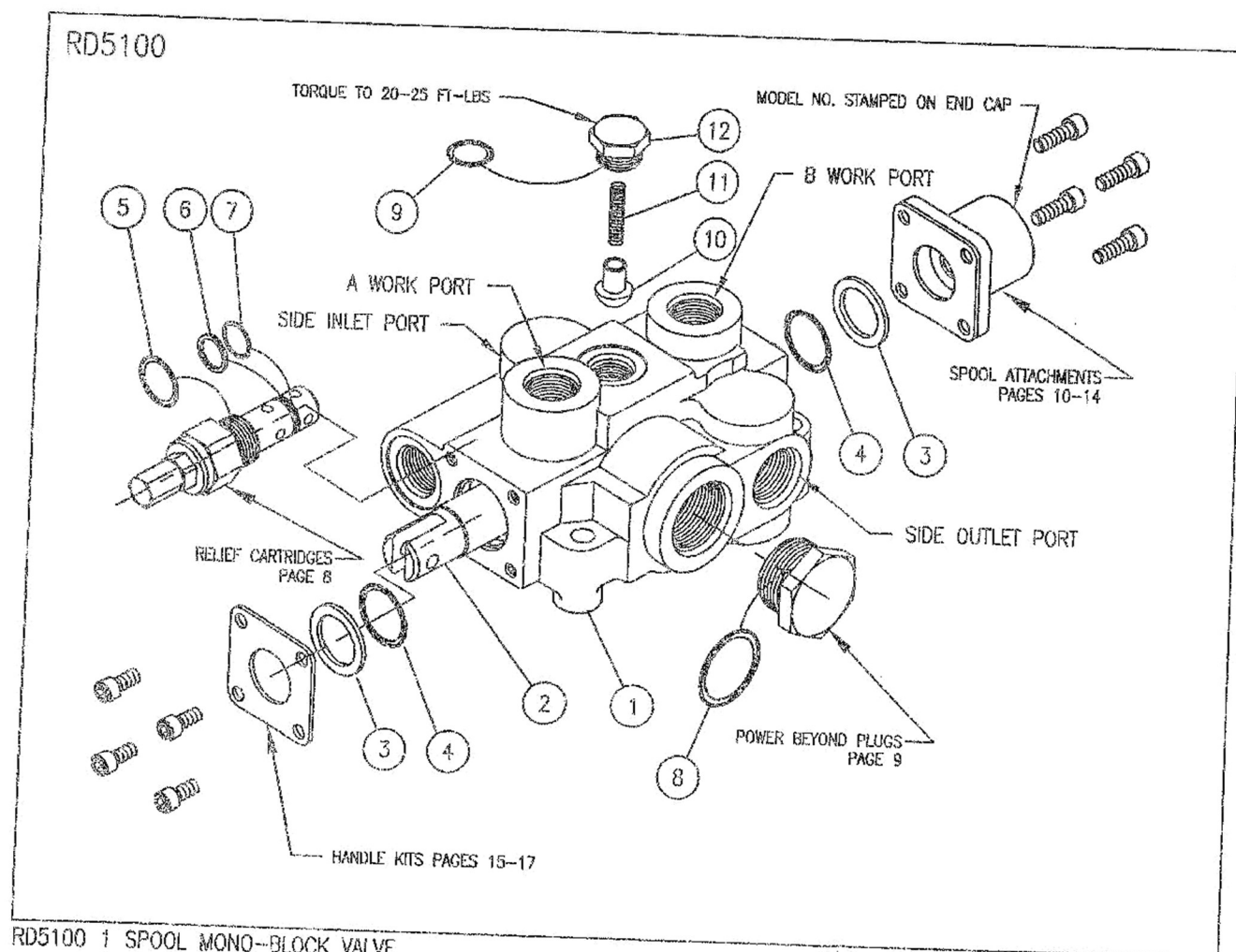


APPALACHIAN MACHINE INC | 5304 Laboratory Street | Dublin, VA 24084

Phone: (540) 674-1914 | [info@appalachianmachine.com](mailto:info@appalachianmachine.com) | [www.appalachianmachine.com](http://www.appalachianmachine.com)

DRAWING F2





## RD5100 1 SPOOL MONO-BLOCK VALVE

ITEM	QTY	PART NO.	DESCRIPTION
1	1		1 SPOOL VALVE BODY
2	1	SEE NOTE 1	SPOOL
3	2	670500010	SPOOL SEAL BACK-UP
4	2	240000213	213 O-RING
5	1	240000116	116 O-RING
6	1	240019015	015 BACK-UP
7	1	240000015	015 O-RING
8	1	240000916	916 O-RING
9	1	240000908	908 O-RING
10	1	670100001	LOAD CHECK POPPET
11	1	670300007	LOAD CHECK SPRING
12	1	671600001	LOAD CHECK PLUG

These are matched parts and are not sold separately.

SEAL KIT 660551001 (PLUS OTHERS)

LOAD CHECK KIT, NO. 660150015

## NOTES:

1. SEE SPOOL IDENTIFICATION CHART ON PAGE 7
2. VALVES WITH 3 WAY SPOOLS HAVE 'A' WORK PORT PLUGGED.

APPALACHIAN MACHINE INC | 5304 Laboratory Street | Dublin, VA 24084

33	3061-00-0125	CAN HOLDER - LOWER PART	2
32	3061-00-0124	CAN HOLDER - UPPER PART	2
31	308-00-0123	MOTOR COVER	1
30	3063-MT-6038	BATTERY CHARGER	1
29	3042-00-2006	FERNER POWER UNIT	1
28	3042-00-2022	CUTTER HANDSET	1
27	3063-00-6014	BATTERY DISCONNECT	1
26	3062-00-2001	CYLINDER	1
25	3063-MT-6038	BATTERY GROUP 31	1
24	3061-00-0109	SPRING - ATLAS LIFT	2
23	3081-00-0108	RIGID CASTER, 4"	2
22	3081-00-0101	SNIVEL CASTER, 4"	2
21	114-28	GREASE FITTINGS	2
20	252-01A-13.1	OLITE BUSHING	1
19	1800 9/4"	LOCKWASHER	2
18	1800 1/2"	LOCKWASHER	2
17	114	LOCKWASHER	10
16	318	LOCKWASHER	39
15	318 1/2-20	HEX NUT	2
14	114-28	HEX NUT	2
13	318-18	HEX NUT	19
12	318-18	HEX HD CAP SCR	2
11	318-18	HEX SDC HD CAP SCR	8
10	114-20	HEX HD CAP SCR	2
9	518-01A, x 2.0"	SHOULDER SCREW	2
8	318-18	HEX HD CAP SCR	2
7	318-18	HEX HD CAP SCR	1
6	318-18	HEX HD CAP SCR	18
5	318-18	HEX HD CAP SCR	2
4	3063-MT-6037	BATTERY BOX	1
3	3061-00-0122	PIVOT, WELDMENT	1
2	3061-00-0121	WATH ARM, WELDMENT	1
1	3081-00-0120	FRAME, WELDMENT	1
ITEM	QTY	DESCRIPTION	UNIT

DO NOT SCALE

ATTENTION: THIS DRAWING IS THE PROPERTY OF THE U.S. ARMY. IT IS TO BE KEPT IN THE OFFICE OF THE PROJECT ENGINEER AND NOT TO BE REPRODUCED OR COPIED WITHOUT HIS PERMISSION.

Updated

**TOLER**

INCORPORATED

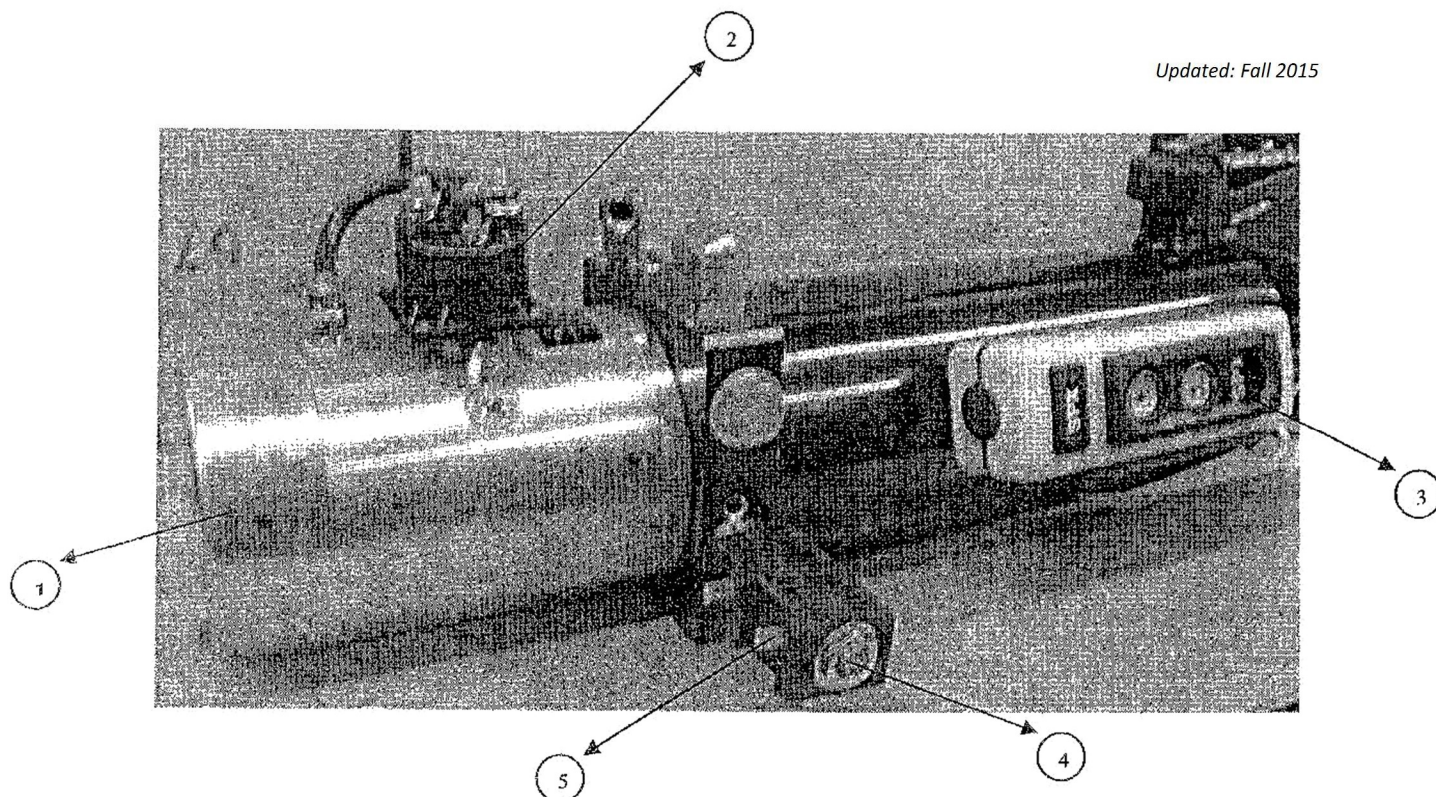
STATVILLE, NC

ITEM NO.

3061-MT-1000

318-18





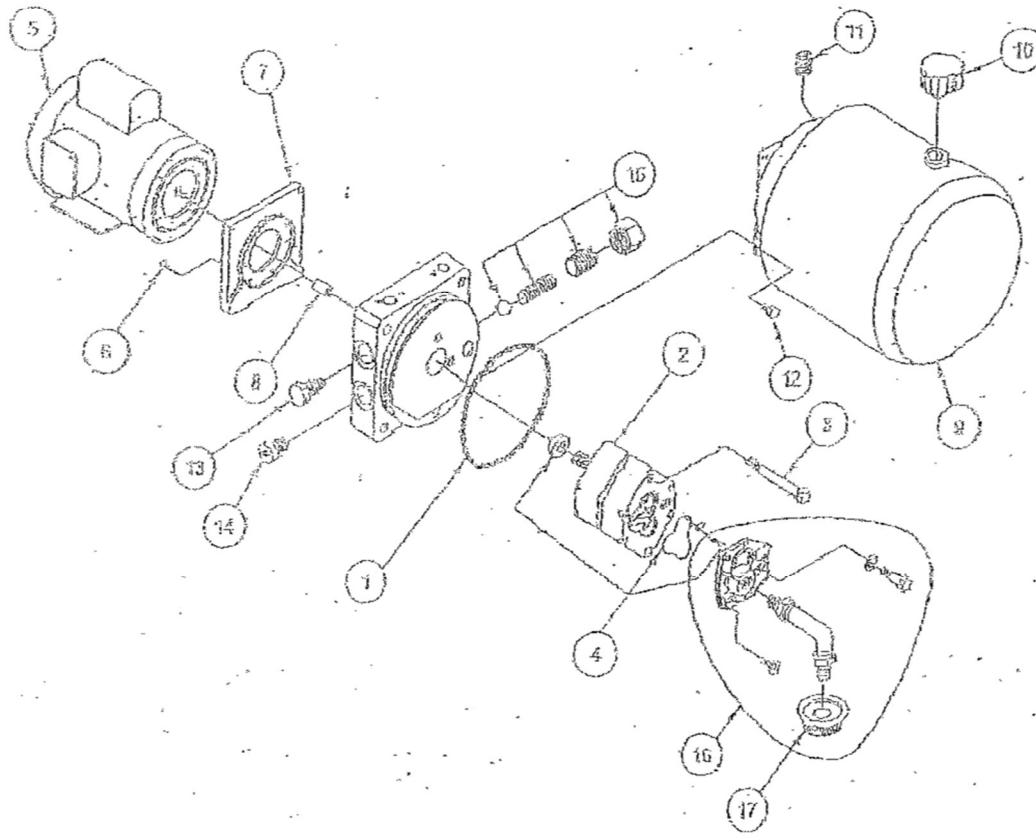
### 3042-00-3000 12 VOLT POWER UNIT

- |                 |                    |
|-----------------|--------------------|
| 1. 3042-00-2044 | 12 VOLT MOTOR      |
| 2. 3042-00-2020 | 12 VOLT SOLENOID   |
| 3. 3042-00-2023 | HANDSET FENNER     |
| 4. 3042-00-0084 | CARTIAGE VALVE SPX |
| 5. 3042-00-0064 | 12 VOLT COIL SPX   |
| 6. 3042-00-2010 | PUMP ( NOT SHOWN ) |

# PARTS DRAWING 5354-F1-3001

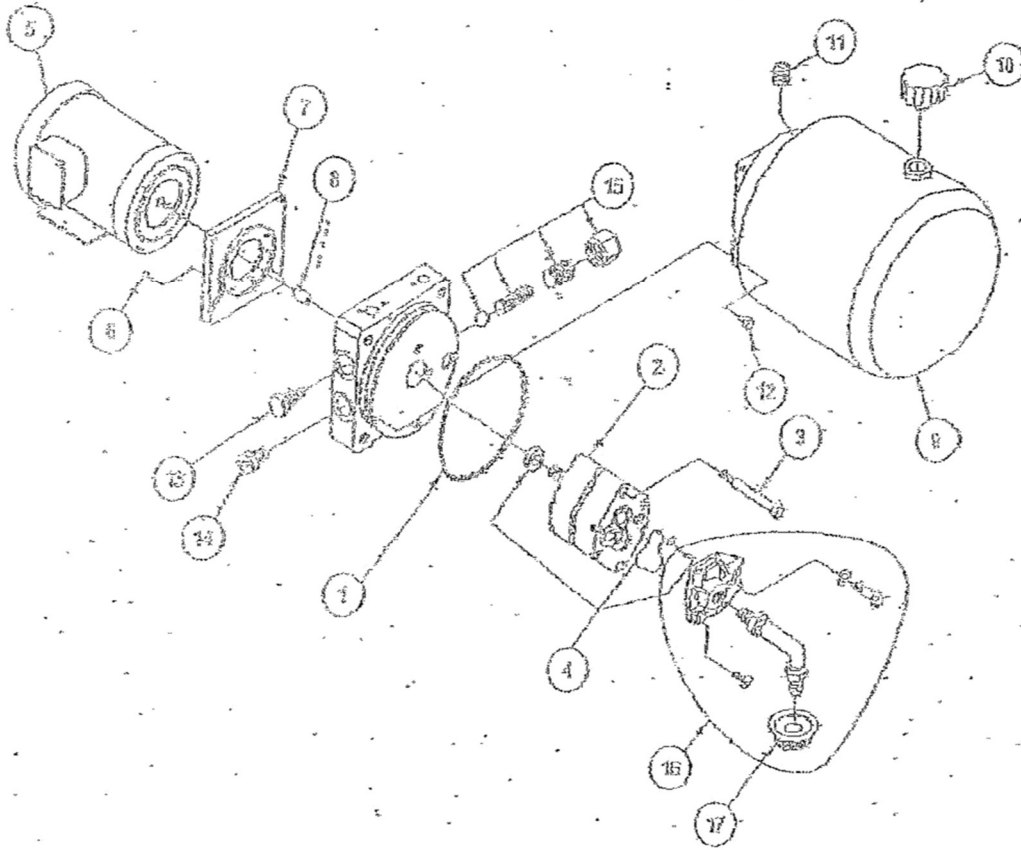
## POWER UNIT

Updated: Fall 2015



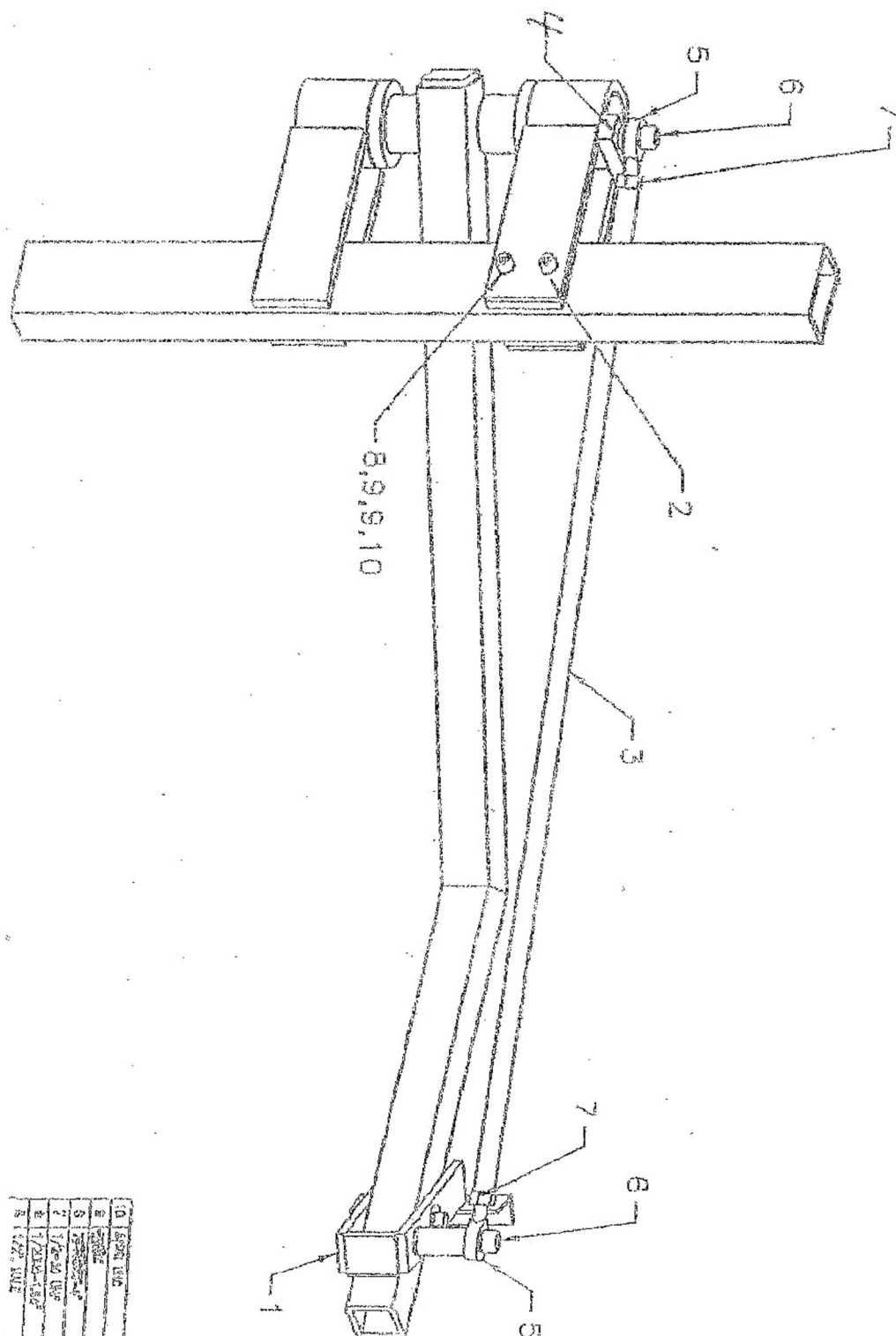
1	Reservoir O-Ring	10	Breather
2	Pump	11	Plug
3	Bolt	12	Bolt
4	Seal Kit	13	Valve Plug 2-way
5	Single Phase AC Motor	14	Plug
6	Bolt	15	Dist. Relief Valve Kit
7	Motor Adaptor	16	Horizontal Plumbing Kit
8	Coupling	17	Filter
9	Reservoir		

# PARTS DRAWING 5354-53-3000 POWER UNIT



1	Reservoir O-Ring	10	Breather
2	Pump	11	Plug
3	Bolt	12	Bolt
4	Seal Kit	13	Valve Plug 2-way
5	Three Phase AC Motor	14	Plug
6	Bolt	15	Dist. Relief Valve Kit
7	Motor Adaptor	16	Horizontal Plumbing Kit
8	Coupling	17	Filter
9	Reservoir		





10	1000-1000	1000-1000
9	1000-1000	1000-1000
8	1000-1000	1000-1000
7	1000-1000	1000-1000
6	1000-1000	1000-1000
5	1000-1000	1000-1000
4	1000-1000	1000-1000
3	1000-1000	1000-1000
2	1000-1000	1000-1000
1	1000-1000	1000-1000



APPALACHIAN MACHINE INC | 5304 Laboratory Street | Dublin, VA 24084  
 Phone: (540) 674-1914 | [info@appalachianmachine.com](mailto:info@appalachianmachine.com) | [www.appalachianmachine.com](http://www.appalachianmachine.com)



## NOTES

## NOTES

## NOTES