



## INSTALLATION / OPERATOR MANUAL

3064 SERIES Vertical Lifters

PROUDLY MADE IN DUBLIN, VIRGINIA USA



APPALACHIAN MACHINE INC | 5304 Laboratory Street | Dublin, VA 24084

Phone: (540) 674-1914 | [info@appalachianmachine.com](mailto:info@appalachianmachine.com) | [www.appalachianmachine.com](http://www.appalachianmachine.com)



## FOREWORD

This manual has been prepared so that the owner, maintenance personnel and operator may readily have available information and instruction pertaining to the installation, maintenance, repair and safe operation of the System.

The extra care in design, quality and manufacture of the System warrants the attention of all concerned. The additional personal attention and cost to provide regular inspection and maintenance will be reimbursed many times over in long-term trouble-free operation.

Maintenance personnel are urged to study this manual, so that a complete understanding of the system's operating principles, trouble-shooting techniques and maintenance methods may be accomplished.

Since units vary, the installation instructions presented in this manual have been generalized. Some deviations from the instructions might be required to complete the unit installation.



## CUSTOMER SERVICE POLICY

### LIFTERS

INSTALLATION: Appalachian Machine Inc. can install the lift unit at your location. Please call for quote.

QUESTIONS: If you are installing the lift unit and have question, please call Customer Service.

PARTS: Appalachian Machine Inc. stocks parts at our plant in Dublin, VA. Parts are shipped one to two business days after order. Emergency part service ships by UPS Next Day if ordered before 2PM EST, Monday – Friday.

PRICES: Call Customer Service.

TERMS: Net 30 days.

ORDER REQUIREMENTS: Minimum \$35 per order.

WARRANTY: All warranties (parts & labor) and returns must have a Return Material Authorization number (RMA#). Call Customer Service for approval and RMA#.

### Customer Service Center

Monday – Friday 7AM-3PM EST

(540) 674-1914

[info@appalachianmachine.com](mailto:info@appalachianmachine.com)



## DESCRIPTION

### 3064 SERIES Vertical Lifter Recycling Dumper

This dumper is designed to increase the productivity of your recycling operation by making it possible to collect rollout carts. It also makes your operation safer by reducing manual lifting and loading.

This dumper has been manufactured to fit your specific make and model of Recycling Truck. In the case of a Roll Off Box, the dumper has been manufactured to fit your specific make and model Roll Off Box and the Roll Off Truck.

Do not install this dumper on any other make and model of equipment as it may not fit or operate properly. If you need to change equipment in the dumper, please consult your local dealer to check compatibility of the dumper you ordered.





## SAFETY INSTRUCTIONS

### 3064 SERIES Vertical Lifters

1. No one should operate the lifter without first reading the manual and receiving hands-on training on the unit.
2. Keep hands clear of the dumper faceplate, chain and drive sprockets when operating.
3. No one should climb, sit or **RIDE** on the lifter.
4. All personnel must stand clear (10 feet away) during the complete lift cycle. The operator must have a clear view of the lifter throughout the lift cycle, up and down.
5. **NEVER** stand under the lift unit when it is operating or in the up position.
6. **NEVER** clean under the lift unit when it is in the up position.
7. **NEVER** leave the unit up in the dumped position.
8. **DO NOT** operate the dumper unless the carriage handle is securely locked into one of the drilled holes in the horizontal rail.
9. **DO NOT** drive the vehicle without locking the carriage handle into one of the holes in the Slide Bar.
10. When dumping the truck body to the rear, first slide the dumper to the rear-most position on the Slide Bar and lock the handle in place.
11. **DO NOT** dump the truck body with the dumper in any other position.
12. Dump only authorized carts that are in good repair. **DO NOT** dump other carts. **DO NOT** dump Toter Carts that are cracked, broken, have bent stop bars or missing parts.
13. **DO NOT** modify this lifter to handle other carts.
14. **DO NOT** operate the system if there are any mechanical or hydraulic problems with the dumper or the truck's hydraulic system.
15. **DO NOT** dump a cart that is over-filled (above the lip of the cart) or overloaded (above the maximum weight printed on the cart or lid).
16. Dump only approved plastic rollout carts on the dumper. The carts must be of the U.S. semi-automated design with the top pick-up point approximately 33" above ground level and the top of the lower bar 15" below the upper pick-up point.
17. **DO NOT** attempt to dump drums, barrels, or any other unauthorized containers.
18. **DO NOT** dump carts containing hazardous waste (per EPA listings), flammable liquids or explosive materials.
19. Wear eye protection when operating.

APPALACHIAN MACHINE INC | 5304 Laboratory Street | Dublin, VA 24084

Phone: (540) 674-1914 | [info@appalachianmachine.com](mailto:info@appalachianmachine.com) | [www.appalachianmachine.com](http://www.appalachianmachine.com)

20. Keep hands clear of operating lift unit. Follow US OSHA lockout and tagout procedures prior to maintaining or repairing the unit.
21. Ensure that the lids of any carts that are latched, locked, or chained shut are fully opened before dumping.
22. **DO NOT** operate the vehicle in areas with overhead obstructions (wires, signs, bridges, etc.) that are lower than the Vertical Bar.
23. **DO NOT** operate the dumper in close proximity to overhead electrical wires.
24. Perform regular checks as listed under Maintenance and Service Schedule.



## OPERATION INSTRUCTIONS

### 3064 SERIES Dump Unit Mounted on a Roll Off Box

#### TO REMOVE BOX FROM TRUCK

1. Raise dumper up to dump position.
2. Move dump unit to front hopper and lock in place.
3. Turn truck engine off.
4. With a wrench, remove the chain from the back of the lift bar (see drawing DE-1041, #s 4, 18, 19, & 20)

**NOTE: Be sure you put nuts washer and spring back on screw when you remove the chain.**

5. With a hammer and a punch, remove pin from 1" x 2" backing bar of lift bar.
6. Pull down on bottom of lift bar then raise up to an angle of 90° or more.
7. Hook chain in slot above lock handle on slide carriage. This will hold the bottom of the lift bar in place when box is placed on the ground.
8. Put pin back in holes on the lift bar.
9. Disconnect hydraulic hoses from box to truck.
10. Connect hose ends together on truck and box.

NOTE: Hose ends have to be connected together on truck before starting engine. Failure to connect hose could cause pump damage. Connecting hoses together on box will keep ends clean and eliminate any oil drainage.

11. Start engine and remove box from truck.



## OPERATION INSTRUCTIONS

### 3064 SERIES Dump Unit Mounted on a Roll Off Box

#### TO PLACE ROLL OFF BOX ON TRUCK

1. Place roll off box on truck and turn engine off.
2. Remove chain from slot on the slide carriage and lower bottom of lift bar.
3. Remove pin from lift bar backing bars.
4. Raise up on the lift bar, line pin holes up, and install pin.
5. Remove nuts from chain screw and connect chain to lift bar.
6. Connect hydraulic hoses from truck to box.
7. Start truck engine, engage PTO, and run dump unit.

**NOTE:** It is recommended that when truck is traveling long distances, the dump unit should be in the dump position. When the dump unit is in the down position, the truck may be over legal width. NEVER drive the truck with the lift bar folded out (as with the box is to be set off onto the ground).



## MAINTENANCE INSTRUCTIONS

### 3064 SERIES Dump Units

#### Daily

1. Check all cam followers; all should turn freely.
2. Check for oil leaks.
3. Check operation of locking handle.
4. Run dump unit before starting route, and check for any damaged parts, loose bolts, or chain damage.

#### Weekly

1. Grease all cam followers.
2. Spray chain with WD-40 or equivalent.
3. Check hoses for wear.
4. Check chain sprockets for wear.

#### Monthly

1. Check welds that secure slide rail to truck or box.



## OPERATION INSTRUCTIONS

### 3064 SERIES Dump Units

1. Tilt can and engage saddle with lifting saddle of unit.
2. Open lid of can.
3. Check area around can to be sure can will not come in contact with persons or things during dump cycle.
4. Pull up on hand valve to raise can.
5. **DO NOT** stop unit until it has completed cycle.
6. Push down on handle of hand valve to lower can.
7. **DO NOT** stop dump unit until it has completed down cycle.
8. To move carriage along slide rail, pull out on locking handle with one hand. With other hand, pull or push carriage with handle above locking handle.

**CAUTION: Be sure locking handle is locked to slide bar before operating dump unit or moving truck.**



## WARNING

BEFORE ANY INSTALLATION OF THIS UNIT THE VOLTAGE FROM THE ELECTRICAL DISCONNECT TO THE MOTOR STARTER HAS TO BE VERIFIED AS THE SAME AS STATED ON THE VOLTAGE LABEL ON THE MOTOR STARTER CONTROL BOX.

FAILURE TO SUPPLY ANY VOLTAGE TO THE MOTOR STARTER THAT IS NOT THE SAME AS THE VOLTAGE STATED ON THE MOTOR STARTER WILL VOID ALL WARRANTIES.



## INSTALLATION INSTRUCTIONS

### 3064 SERIES Vertical Lift

#### Aluminum Body Rear Dump Recycling Truck

1. Park empty truck on level pad.
2. Measure up from ground 55-1/2" and make a mark on the front most door slide rail. This mark will be on the top of the EXTERNAL MOUNTING PLATE #3059-00-2715 of the dumper.
3. Measure up from the ground 55-1/2" and make a mark on the rear most door slide rail.
4. Place chalk string on the front and rear door slide rail marks and mark the remaining rails.
5. On one side rail at a time, hold the top of the EXTERNAL MOUNTING PLATE #3059-00-2715 flush with line from Step 4, and center it on the rail. Using a transfer punch or scribe, mark each of the six holes.

**NOTE: The plate is mounted with the four offset holes towards the top.**

6. Pilot drill MOUNTING PLATE holes 1/4" diameter. Finish drill 13/32" through the outer wall tubing only. Repeat for all side rails.
7. Starting with the front and rear side rails, insert the INTERNAL SLIDE BAR MOUNTING PLATE #3059-00-2714 **inside** the slide rail. Because the tops of these slide rails are partially obstructed, lower a light gauge wire through the top until it comes out the bottom of the rail. Insert the wire through one of the top tapped holes in the #3059-00-2714 plate (**REMEMBER**, the four offset holes go toward the top) and secure with one light twist – this wire will have to be pulled out later so do not twist the wire tight.

Carefully insert the plate into the bottom of the slide rail and gently pull it up with the wire. Any safety light on the rails must be temporarily removed.

Line up the plate through the holes drilled in the slide rail and install four #5590-00-0424 SOCKET HEAD CAP SCREWS in top and bottom holes. Install two #5520-00-0424 HEX HEAD BOLTS in middle holes. Remove wire and tighten all bolts.

The INTERNAL MOUNTING PLATES for the other rails should be inserted **from the top** of the slide rail, lined up, and bolted to the EXTERNAL MOUNTING PLATES.

APPALACHIAN MACHINE INC | 5304 Laboratory Street | Dublin, VA 24084

Phone: (540) 674-1914 | [info@appalachianmachine.com](mailto:info@appalachianmachine.com) | [www.appalachianmachine.com](http://www.appalachianmachine.com)



8. Measure down 6" from the top of the EXTERNAL SLIDE BAR MOUNTING PLATE #3059-00-2715 on the front and rear slide rails and make a mark. With a chalk line, mark all other external plates. The top of the 1" x 2" backing on the SLIDE BAR #3059-00-2702 will mount flush with this line.
9. Place the SLIDE BAR #3059-00-2702 beside the truck body with the sawed and drilled end to the rear of the truck. Using a forklift or a boomlift, carefully lift the SLIDE BAR up so that it is flush with the front of the truck bed.  
**NOTE: The rear of the SLIDE BAR will probably NOT be flush with the rear of the truck bed; the key is the front.**
10. Line the top of the 1" x 2" BACKING PLATE up with the mark on the front slide rail. Tack weld in place. Line the top of the 1" x 2" BACKING PLATE up with the mark on the rear slide rail tack weld. After the front and rear of the SLIDE BAR have been tacked in place, line and tack weld the remaining EXTERNAL MOUNTING PLATES to the SLIDE BAR.
11. **STOP!** Carefully check the height of the top of the SLIDE BAR from the ground – it should measure approximately 50-1/2". The bar should run straight from end to end without bowing vertically and should be level with the ground.
12. Weld the 1" x 2" backing 100% to each slide rail; top, bottom and both sides. These welds must be solid; they hold the dumper to the truck when it is lifting carts – up to 400 LBS.
13. Carefully lift the complete CARRIAGE FRAME #3059-00-2700 up and slide the CARRIAGE BEARINGS onto the rear of the SLIDE BAR. The bottom two CARRIAGE BEARINGS are adjustable. Field adjustment of these bearings most likely will not need adjusting, because the rail is matched to the carriage. If adjustment is necessary, use a hex head wrench to loosen the hex head set screws in the CARRIAGE BEARINGS. Once on the slide rail, the bottom CARRIAGE BEARINGS must be adjusted to a 0.005" clearance between the bottom bearings and the slide rail. A 0.005" feeler gauge is required to make this adjustment.
14. The SLIDE BAR is not pre-drilled with positioning holes for each compartment. Remove the LOCKING HANDLE #3059-00-2710, slide the carriage to the center of each compartment, and – one at a time – punch a hole center THROUGH the 9/16" drill bushing provided in the carriage. Pilot drill a 11/64" hole then drill a 9/16" hole through the CARRIAGE PIN BUSHING. Move the carriage and drill the hole oversize at 19/32". The hole must penetrate through the SLIDE BAR. Countersink each hole using a 1", 41° bit.

Replace the LOCKING HANDLE and check the hole's fit. The carriage must always be locked in place prior to dumping or moving truck.

15. Lift VERTICAL LIFT ASSEMBLY #3064-00-1200 and bolt to carriage frame. Check clearance of end of LIFT ASSEMBLY above top of truck body. This should be approximately 6" from one end of the truck to the other. This will allow a canvas to cover top of hoppers when traveling long distances.
16. After completion of Step 15, it is necessary to **weld solid mounting bars** of VERTICAL LIFT ASSEMBLY. Unit's mounting bars are shipped tack welded in case field height adjustments are required.

APPALACHIAN MACHINE INC | 5304 Laboratory Street | Dublin, VA 24084

17. Install top ANGLE GUIDE #3064-00-1028. Measure down from top of front door slide rail  $\frac{1}{2}$ "; make a mark. Measure down from top of back door slide rail  $\frac{1}{2}$ "; make a mark. Mark remaining door slide rails with chalk line.

Line up top of ANGLE GUIDE external bracket on mark. Mark and drill holes for ANGLE GUIDE BRACKET. **NOTE: These brackets may vary due to different body manufacturer designs.** No internal brackets are required for these brackets.

18. After Step 17 is completed, place ANGLE GUIDE on ANGLE GUIDE BRACKET on front slide door rail flush with front edge of truck body. Tack weld in place. Measure from top of ANGLE GUIDE to top of 1" x 2" backing plate on slide rail and tack weld ANGLE GUIDE in place on back slide door rail. Level guide rail horizontally and vertically, and weld to each slide door rail bracket.
19. Using Drawing #DE-1041, assemble ANGLE GUIDE PLATE #13 to CAM FOLLOWER ADJUSTMENT PLATE #14 with BOLTS #12. Install CAM FOLLOWER #11 to plate. DO NOT tighten bolts.
20. After completing Step 19 slide CAM FOLLOWERS between ANGLE GUIDE. Place edge of ANGLE GUIDE PLATE to inside edge of the two 1" x 2" VERTICAL BAR BACKING PLATES and tack weld in place.
21. Slide dump unit on slide rail from front to back, checking alignment of CAM FOLLOWERS along ANGLE GUIDE. If alignment is good front to back, weld ANGLE GUIDE PLATE solid to the 1" x 2" bars and tighten bolts and CAM FOLLOWER nuts.
22. Install HYDRAULIC HAND VALVE to carriage frame.
23. Connect hoses supplied to A & B ports on hand valve to hose ports marked #21 on Drawing #1041
24. With dump unit positioned in front of the front hopper, attach fixed point of the hose guard chain with hoses installed to support the tray under slide rail.

Attach the driver end of the hose guard chain to the hose guard chain bracket on the slide carriage.

25. Connect hose ends of the driver end of hose guard chain to pressure and tank ports of hand valve.
26. Install 5354-00-0614 FLOW VALVE.
  1. Locate pressure line from pump to body lift.
  2. Disconnect pressure line from body lift.
  3. Connect port marked **INLET** on flow valve to pressure line from pump.
  4. Connect port marked **BYPASS** to pressure port of body lift.
  5. Install pressure and return hoses from hose end on fixed point of hose guard chain to flow valve.

**NOTE: Mark ends of pressure hoses with tape from pressure port of hand valve. This will help eliminate the problem of connecting hoses to wrong ports.**

**26 – 5. Continued** - Install hoses with dump body up and be sure hoses cannot be crimped

APPALACHIAN MACHINE INC | 5304 Laboratory Street | Dublin, VA 24084

between body and chassis.

6. Connect pressure hose from hand valve to REG. port on flow valve.

7. Connect return hose from hand valve to port on side of flow valve connected to bypass port.

27. If unit is an Eager Beaver truck or a truck that has a small hydraulic oil tank (less than 10 gallons), a 26-gallon oil tank available from your dealer should be installed.

28. Start truck and engage PTO and check for oil leaks. Raise body up and down to be sure hoses are not crimped between body and chassis.

29. Test dump unit. Run dump unit up and down, check for any alignment problems. Test dump unit with a load in cart. Unit should dump cart with maximum load rating marked on cart.



## INSTALLATION INSTRUCTIONS

### 3064 SERIES Vertical Lift

#### Roll-Off Box Mounted on Truck

1. Park empty truck on level ground with roll-off box on truck.
2. Measure up from the bottom of the box on the front of the box 7" and make a mark on the front rib.
3. Measure up from the ground to the mark in Step 2.
4. Using the measurement from Step 3, make a mark on the back rib of the box.
5. Place a chalk string on the marks on the front and back ribs of the box and make a mark on each rib of the side of the box.
6. Place the SLIDE BAR # 3059-00-2702 beside the truck body with the sawed and drilled end to the rear of the truck. Using a forklift or a boomlift, carefully lift the SLIDE BAR up so that it is flush with the front of the box.

**NOTE: The rear of the SLIDE BAR will probably not be flush with the rear of the box; the key is the front.**

7. Line the top of the 1" x 2" BACKING PLATE of the SLIDE BAR with the front mark on the side of the box. Tack weld the SLIDE BAR in place. Line the top of the 1" x 2" BACKING PLATE up with the rear mark. Tack weld the rear of the SLIDE BAR in place. Tack weld the bar to each of the remaining ribs.

**NOTE: The SLIDE BAR should be level with the ground with the box on the truck.**

8. Weld the 1" x 2" BACKING PLATE 100% to each rib, top, bottom and both sides. These welds must be solid; they hold the dumper to the truck when it is lifting carts - up to 400 LBS.
9. Carefully lift the complete CARRIAGE FRAME #3059-00-2700 up and slide the CARRIAGE BEARINGS onto the rear of the SLIDE BAR. The bottom two CARRIAGE BEARINGS are adjustable. Field adjustment of these bearings most likely will not need adjusting, because the rail is matched to the carriage. If adjustment is necessary, use a hex head wrench to loosen the hex head set screws in the CARRIAGE BEARINGS. Once on the SLIDE BAR, the bottom CARRIAGE BEARINGS must be adjusted to a 0.005" clearance between the bottom bearings and the SLIDE BAR. A 0.005" feeler gauge is required to make this adjustment.
10. The SLIDE BAR is not pre-drilled with positioning holes for each compartment. Remove the LOCKING HANDLE #3059-00-2710, slide the CARRIAGE FRAME to the center of each compartment, and one at a time, punch a hole center through the 9/16" drill bushing provided in the carriage. Pilot drill a 11/16" hole, then drill a 9/16" hole through the

CARRIAGE PIN BUSHING. Then move the carriage and drill the hole oversize to 19/32". The hole must be through the SLIDE BAR. Countersink each hole using a 1", 41° bit.

Replace the LOCKING HANDLE and check the hole's fit. The carriage must always be locked in place prior to dumping or moving truck.

11. Lift VERTICAL LIFT ASSEMBLY #3064-00-1200 and bolt to CARRIAGE FRAME. Check clearance of end of LIFT ASSEMBLY above top of box. This should be approximately 6" from one end of box to other. This will allow a canvas to cover top of box when traveling long distances.
12. After completion of Step 11, it is necessary to weld solid the MOUNTING BARS of the LIFT ASSEMBLY. The MOUNTING BARS are shipped tack welded in case field height adjustments are required.
13. Install top ANGLE GUIDE #3064-00-1028. Measure down from top of box on front rib ½"; make a mark. Measure from mark down to top of 1" x 2" backing plate on SLIDE RAIL. Using measurement from front rib as a reference, measure from top of 1" x 2" backing plate and mark back rib.

**NOTE: ANGLE GUIDE must be level with SLIDE BAR.**

Line ANGLE GUIDE flush with front of box and tack weld in place on mark on front rib. Tack weld ANGLE GUIDE in place on mark on back rib.

Be sure ANGLE GUIDE is straight with side of box level horizontally and vertically and weld to each rib.

14. Using drawing # DE-1041, assemble ANGLE PLATE GUIDE #13 to CAM FOLLOWER ADJUSTMENT PLATE #14 with BOLTS #12. Install CAM FOLLOWER #11 to plate.  
**DO NOT** tighten bolts.
15. After completing Step 14, slide CAM FOLLOWERS between ANGLE GUIDE. Place edge of ANGLE GUIDE PLATE to inside edge of the two 1" x 2" VERTICAL BAR BACKING PLATES and tack weld in place.
16. Slide dump unit on SLIDE RAIL from front to back, checking alignment of CAM FOLLOWERS along ANGLE GUIDE. If alignment is good front to back, weld ANGLE GUIDE PLATE solid to the 1" x 2" bars and tighten bolts and CAM FOLLOWER nuts.
17. Install HYDRAULIC HAND VALVE to frame.
18. Connect hoses supplied to A & B ports on hand valve to hose ports marked #21 on Drawing #1041.
19. With dump unit positioned in front of the front hopper, attach the fixed point of HOSE GUARD CHAIN with hoses to the support tray above the SLIDE RAIL. Attach the driver end of HOSE GUARD CHAIN to the hose guard chain bracket on the slide carriage.
20. Connect hose ends of driver end of the hose guard chain to pressure and tank ports of hand valve.

21. Install 5354-00-0614 FLOW VALVE.

1. Locate pressure line from pump to roll-off box lift.
2. Disconnect pressure line from pump to box lift.
3. Connect port marked **INLET** on flow valve to pressure line from pump.
4. Connect port marked **BYPASS** to pressure port of box lift.
5. Install pressure and return hoses from hose ends on fixed point of hose guard chain.

A- Install pressure and return hose from fixed point along bottom of box to the pivot point of the box lift of the truck.

B- Install Q-Connectors to the hose ends.

1- Male end of Q-Connector to pressure hose coming from fixed point.

2- Female end of Q-Connector to return hose coming from fixed point.

**NOTE: THIS IS VERY IMPORTANT, because hose ends coming from flow valve will have to be connected together when box with dump unit is not on truck.**

3- Install hoses with matching ends of Q-Connectors along chassis of truck to flow valve.

4- Connect pressure hose from hand valve to REG. port on flow valve.

5- Connect return hose from hand valve to PORT on side of flow valve connected to bypass port.

22. With all hoses connected, start truck and engage PTO and check for leaks. Raise box up and down to be sure hoses are not crimped between box and chassis.

23. Test dump unit. Run dump unit up and down; check for any alignment problems. Test dump unit with a load in cart. Unit should dump cart with maximum load rating marked on cart.



## PARTS LIST

### 3064-00-1000 Lift Plate

	<u>PART NUMBER</u>	<u>DESCRIPTION</u>	<u>QTY</u>
1	3064-00-1329	Faceplate	1
2	3064-00-1322	Motor Sprocket	2
3	3064-00-1323	Chain Sprocket	2
4	3064-00-1324	Chain Sprocket Washer	2
5	3064-00-1325	Face Plate Pivot Bar	2
6	3064-00-1326	Hook Operator Bar	1
7	3064-00-1327	Motor Mount Plate	1
8	3064-00-1328	Motor Mount	1
9	3064-00-1317	Motor Cam Bracket	1
10	3064-00-1318	Pivot Block	2
11	3064-00-1319	Lock Hook	1
12	3064-00-1320	Lower Cam Block	2
13	3064-00-1321	Upper Cam Block	2
14	3064-00-1305	Plate Pivot Block	1
15	3064-00-1308	HYD Motor Cap	1
16	3057-00-3900	Lifting Saddle	1

APPALACHIAN MACHINE INC | 5304 Laboratory Street | Dublin, VA 24084

Phone: (540) 674-1914 | [info@appalachianmachine.com](mailto:info@appalachianmachine.com) | [www.appalachianmachine.com](http://www.appalachianmachine.com)

17	3064-00-6001	Hydraulic Motor	1
18	3064-00-1366	Cam Follower	12
19	3064-00-1367	Cam Follower	1
20	3064-00-1368	Chain Sprocket Bearing	4
21	5031-00-0510	Pivot Block Bearing	6
22	5031-00-0518	Hook Operating Bearing	2
23	5589-00-0300	Button Head Screw	3
24	5590-00	Socket Head Screw	2
25	5590-00	Socket Head Screw	4
26	5590-00	Socket Head Screw	14
27	5590-00	HYD Motor Screw	1
28	5590-00	Motor Mount Screw	4
29	5590-00	Set Screw	2
30	5570-00	Shoulder Bolt	2
31	5570-00	Shoulder Bolt	2
32	5570-00	Shoulder Bolt	2
33	5430-00	Cam Follower Nut	1
34	5430-00	Motor Cam Nut	1
35	5440-00	Lock Washer	1
36	5430-00	Lock Nut	5
37	5440-00	Lock Washer	13



38	5440-00	Lock Washer	23
39	5500-00	Flat Washer	2
40	5500-00	Flat Washer	2
41	5435-00	Press Fit Grease Fitting	13
42	5313-00	Hydraulic Fitting	2



## MAINTENANCE INSTRUCTIONS

### 3064-00-2000

1. Chain must be lubricated with CRC, LPS or SprayOn chain and wire rope lubricant every 120 hours of use.
2. The three bearing blocks must be greased every 120 hours of use.
3. Weekly check for any loose bolts, oil leaks and check chain tension.
4. Weekly check cam followers for wear.
5. Weekly check speed of unit, UP speed should not be less than 8 seconds UP and 8 seconds down.

IF UNIT IS STAND MOUNTED AND HAS A POWER UNIT

6. Monthly check oil level of power unit.
7. Monthly check color of oil. If oil has milky color replace oil.
8. Weekly check hand valve spool for leaks.



## PARTS LIST

### 3064-00-1000 Lift Plate

	<u>PART NUMBER</u>	<u>DESCRIPTION</u>	<u>QTY</u>
1	3063 or 3064	Dump Unit	1
2	3059-00-2700	Carriage Frame	1
3	3059-00-2702	Slide Bar	1
4	3059-00-2701	Upper Carriage Bearing	2
5	3059-00-2717	Lower Carriage Bearing	2
6	3059-00-2715	External Mounting Plate	
7	3059-00-2714	Internal Mounting Plate	
8	5590-00-0424	Socket Head Cap Screw	
9	5290-00-0424	Hex Bolt	
10	5590-00-0524	Socket Head Cap Screw	1
11	5600-00-0140	Carriage Spring	1
12	5239-00-0010	Handle Pin	1
13	5239-00-0022	Locking Handle Pin Guide	1
14	5239-00-0020	Lock Pin	1
15	3059-00-2710	Locking Handle	1

APPALACHIAN MACHINE INC | 5304 Laboratory Street | Dublin, VA 24084

Phone: (540) 674-1914 | [info@appalachianmachine.com](mailto:info@appalachianmachine.com) | [www.appalachianmachine.com](http://www.appalachianmachine.com)

16	5239-00-0015	Cotter Pin	1
17	5440-00-0700	Lock Washer	2
18	5260-00-0700	Hex Nut	2
19	5460-00-0200	Flat Washer	2
20	5260-00-0775	Hex Nut	2
<b><u>NOT SHOWN</u></b>			
	5320-00-100	Hose Guard Chain	
	5320-00-1005	Left Fixed Point Connector	
	5320-00-1006	Left Driven Connector	
	5320-00-1010	Right Fixed Point Connector	
	5320-00-1011	Right Driven Connector	
	5320-00-1003	Hose Guard Tray 10' Section	
For safety replacement, Upper Carriage Bearings have to be replaced with 3059-00-2701 Upper Carriage Bearings. Lower Carriage Bearings cannot be used for Upper Carriage Bearings.			



## PARTS LIST

### 3064 Vertical Lift Bar

	<u>PART NUMBER</u>	<u>DESCRIPTION</u>	<u>QTY</u>
*1	3064-00-1019	Vertical Bar	1
*2	3064-00-1020	Chain – <i>Various Lengths</i>	
3	3064-00-1021	Stop Block	
4	3064-00-1022	Chain Adjuster	1
5	3064-00-1028	Angle Guide	1
6	3064-00-1034	Cam Follower	2
7	5590-00-0420	Socket Head Cap Screw	2
8	3064-00-1029	Angle Guide Plate	1
9	3064-00-1030	Cam Follower	
		Adjustment Plate	
10	5262-00-0476	Cam Follower Nut	1
11	5590-00-0524	Socket Head Cap Screw	4
12	5440-00-0400	Lock Washer	2
13	3064-00-1031	Chain Adjuster Spring	1
14	3064-00-1032	Chain Washer	1
15	5430-00-0500	Lock Nut	2

APPALACHIAN MACHINE INC | 5304 Laboratory Street | Dublin, VA 24084

Phone: (540) 674-1914 | [info@appalachianmachine.com](mailto:info@appalachianmachine.com) | [www.appalachianmachine.com](http://www.appalachianmachine.com)

16	5340-FS-4075	Hose Assembly	1
17	5340-FS-4100	Hose Assembly	1
18	5340-FS-4075	Hose Assembly	1
19	5340-FS-4001	Hose Assembly	1
20	5340-FS-4002	Hose Assembly	1
21	5314-00-0031	Mounting Nuts	2
22	5320-00-0441	10' Hose Assembly	1
23	5320-00-0442	12' Hose Assembly	1
24	5320-00-1002	Hose Chain (measure in feet)	
25	5320-00-1003	Hose End Bracket (pair)	1
26	5314-00-0006	3/8" Bulkhead 90°	1
27	5314-00-0005	3/8" Bulkhead Nut	1
*Vertical bar, chain and hose length can vary due to vertical bar length. Please state length of these items when ordering.			



## PARTS LIST

### 3064 Hydraulic Valves and Accessories

<u>PART NUMBER</u>	<u>DESCRIPTION</u>
5354-00-0612	¾" Flow Regulator
5354-00-0614	1" Flow Regulator
5354-00-0620	3/8" Adjustable Flow Control Valve
5354-00-0618	3/8" Flow Regulator Valve
5354-00-0641	50/50 Flow Divider
<b>Hand Valves / Dukes</b>	
5354-00-0900	Hand Valve Tandem Center
5354-00-0902	Hand Valve Closed Center
<i>See drawing DA1276 &amp; DA1277 for Hand Valve parts</i>	



## PARTS LIST

### 3064-ST-2000 Stand Mount

	<u>PART NUMBER</u>	<u>DESCRIPTION</u>
1	3064-00-2000	Lift Assembly
2	5354-F1-3001	Power Unit Single Phase
2	5354-F3-3003	Power Unit Three Phase
3	5354-MS-3208	208 Volt / Three Phase Motor Starter
3	5354-MS-3230	230 Volt / Three Phase Motor Starter
3	5354-MS-3460	460 Volt / Three Phase Motor Starter
3	5354-MS-1120	120 Volt / Single Phase Motor Starter
3	5354-MS-1220	220 Volt / Single Phase Motor Starter
4	5354-00-2500	Prince Hand Valve
5	3064-00-0000	Stand





## PARTS LIST

### 3064-00-2000 Lift Unit

	<u>PART NUMBER</u>	<u>DESCRIPTION</u>
1	3064-00-6022	Flared Cam Follower
2	3064-00-6001	Lift Assembly
3	3064-00-6023	5/16" Key
4	3064-00-6002	Cam Spacer
5	3064-00-6003	Carriage Chain Connector
6	3064-00-6004	Chain Take Up Bar
7	3064-00-6005	Chain
8	3064-00-4442	Faceplate Block
9	3064-00-6006	Faceplate Spacer
10	3064-00-6007	3 Bolt Bearing
11	5440-00-0500	½" Lock Washer
12	5440-00-0400	3/8" Lock Washer
13	5440-00-0300	5/16" Lock Washer
14	5440-00-0800	7/8" Lock Washer
15	5260-00-0400	3/8" Hex Nut
16	5260-00-0300	5/16" Hex Nut

APPALACHIAN MACHINE INC | 5304 Laboratory Street | Dublin, VA 24084

Phone: (540) 674-1914 | [info@appalachianmachine.com](mailto:info@appalachianmachine.com) | [www.appalachianmachine.com](http://www.appalachianmachine.com)

17	5260-00-0900	7/8" Hex Nut
18	5251-00-0525	HCS ½-13 x 1-3/4"
19	5250-00-0420	HCS 3/8-16 x 1-1/4"
20	5250-00-0428	HCS 3/8-16 x 2"
21	5250-00-0460	HCS 3/8-16 x 2-1/4"
22	5250-00-0410	HCS 3/8-16 x 3/4"
23	5250-00-0412	HCS 3/8-16 x 7/8"
24	5270-00-0420	Shoulder Screw .375 x 2
25	5590-00-0297	Set Screw Cone 3/8-16 x 1"
26		No item #26
27	3064-00-0297	Hook Pivot Pin
28	3064-00-6009	Hook Spacer
29	3064-00-6010	Hook Bearing Block
30	3064-00-6011	Hook Pivot Pin
31	3064-00-5100	Hydraulic Motor
32	3064-00-6012	Idler Shaft
33	3064-00-6013	Lock Hook
34	3064-00-6014	Lock Hook
35	3064-00-6015	Faceplate
36	3064-00-6016	Motor Drive Shaft
37	5030-00-0726	Bushing 1" OD x 3/4" ID x 1/2"
38	5030-00-0527	Bushing ¾" OD x ½" ID x ¾"

39	5031-00-0512	Bushing 5/8" OD x 1/2" ID x 1/2"
40	5031-00-0513	Bushing 5/8" OD x 1/2" ID x 7/16"
41	5110-00-0020	Cotter Pin
42	3057-00-3900	Saddle
43	3064-00-6017	Side Plate Carriage
44	3064-00-6018	Spacer Faceplate Bottom
45	3064-00-6019	Spacer Faceplate Top
46	3064-00-6020	Chain Sprocket
47	3064-00-6021	Take-up Adapter
48	5500-00-0500	1/2" Washer
49	5500-00-0400	3/8" Washer



## MOTOR STARTER PARTS LIST

### Cutler-Hammer Three-Phase Magnetic

<u>Item #</u>	<u>PART NUMBER</u>	<u>DESCRIPTION</u>
1	5354-MS-3208	208 Volt Starter Assembly
1	5354-MS-3230	230 Volt Starter Assembly
1	5354-MS-3460	460 Volt Starter Assembly
2	5354-MS-3020	Key Switch (CH10250ED824)
3	5354-MS-3021	Contact Block (CH10250T53)
4	5354-MS-5208	208 Volt Replacement Starter (CH AN16DNOE)
4	5354-MS-5230	230 Volt Replacement Starter (CH AN16DNOB)
4	5354-MS-5460	460 Volt Replacement Starter (CH AN16DNOC)
5	5354-MS-4208	208/60 Coil (CH 9-2703-9)
5	5354-MS-4230	230/60 Coil (CH 9-2703-2)
5	5354-MS-4460	460/60 Coil (CH 9-2703-3)
6	5354-MS-3L15	Heater Pack 208/240 Volt 5HP (CH H2012B-3)
6	5354-MS-3H15	Heater Pack 460 Volt 5HP (CH H2010B-3)

**NOTE: WHEN ORDERING REPLACEMENT HEATERS PLEASE SUPPLY MOTOR HORSEPOWER AND VOLTAGE INFORMATION**



## PARTS LIST

### 5354-F3-3003 & F1-3001 POWER UNIT

<u>ITEM</u>	<u>PART NUMBER</u>	<u>DESCRIPTION</u>
1	5354-FE-3010	Reservoir O-Ring
2	5354-FE-3011	Pump
3	5354-FE-3012	Bolt
4	5354-FE-3013	Seal Kit
5	5354-F1-3002 5354-F3-3004	Motor Single Phase 2 HP Motor Three Phase 2 HP
6	5354-FE-3014	Bolt
7	5354-FE-3015	Motor Adaptor
8	5354-FE-3016	Coupling
9	5354-FE-3017	Reservoir
10	5354-FE-3018	Breather
11	5354-FE-3019	Plug
12	5354-FE-3020	Bolt
13	5354-FE-3021	Valve Plug
14	5354-FE-3022	Plug
15	5354-FE-3023	Relief Valve Kit
16	5354-FE-3024	Horizontal Pumping Kit
17	5354-FE-3025	Filter
18		Motor Starter

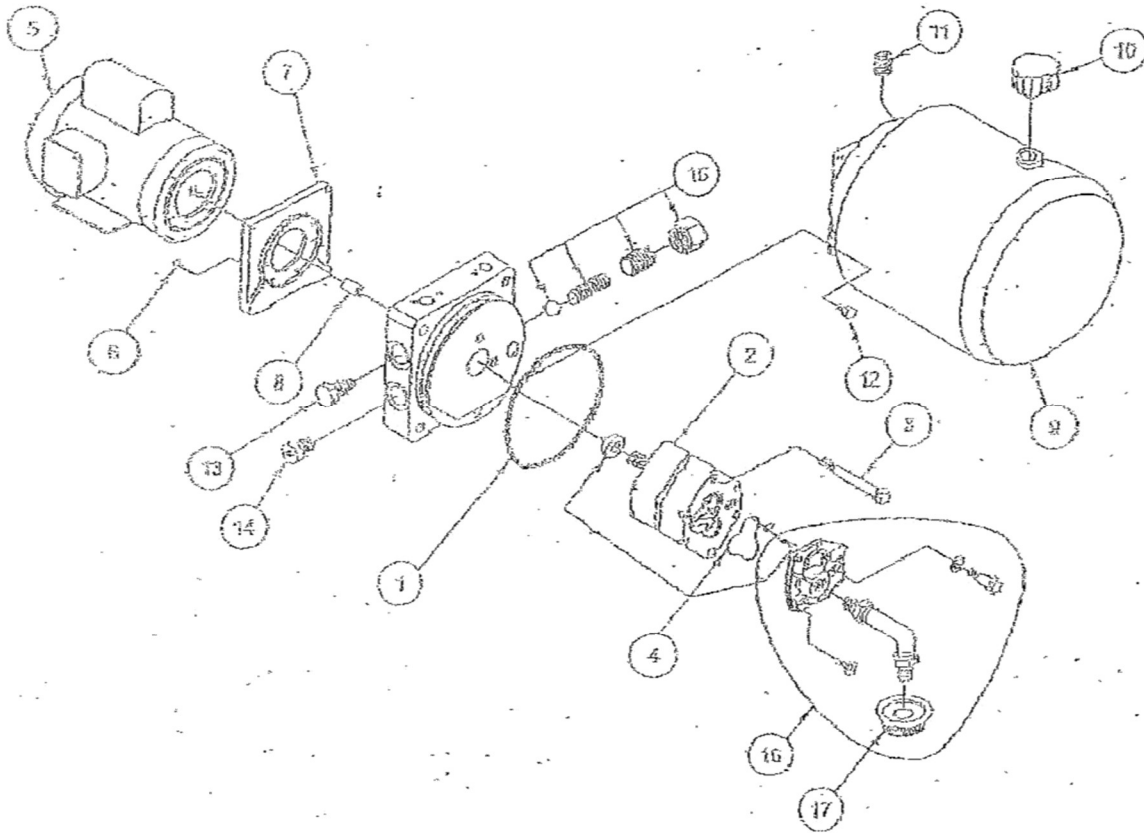
APPALACHIAN MACHINE INC | 5304 Laboratory Street | Dublin, VA 24084

Phone: (540) 674-1914 | [info@appalachianmachine.com](mailto:info@appalachianmachine.com) | [www.appalachianmachine.com](http://www.appalachianmachine.com)

# PARTS DRAWING 5354-F1-3001

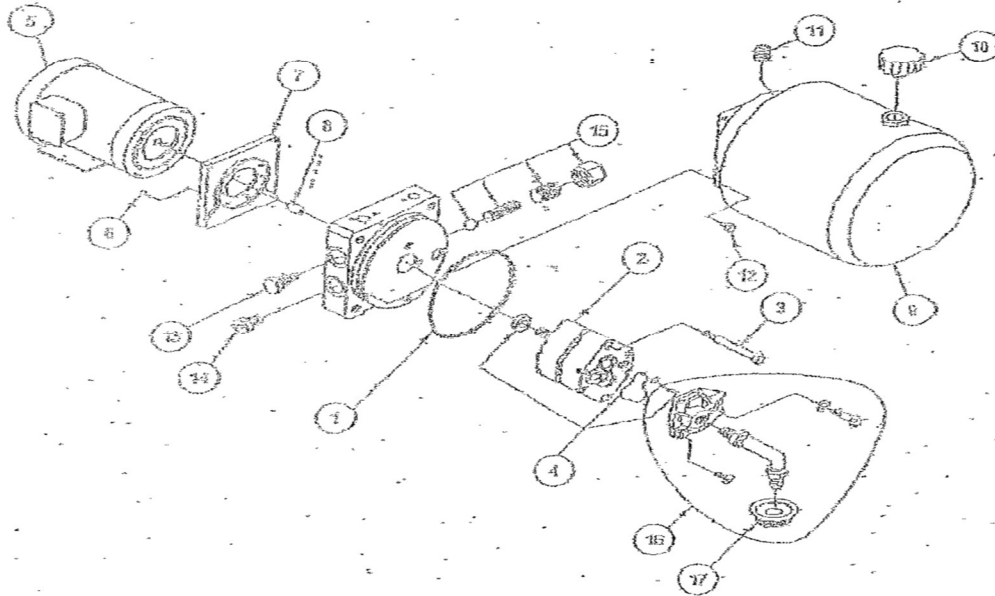
## POWER UNIT

Updated: Fall 2015



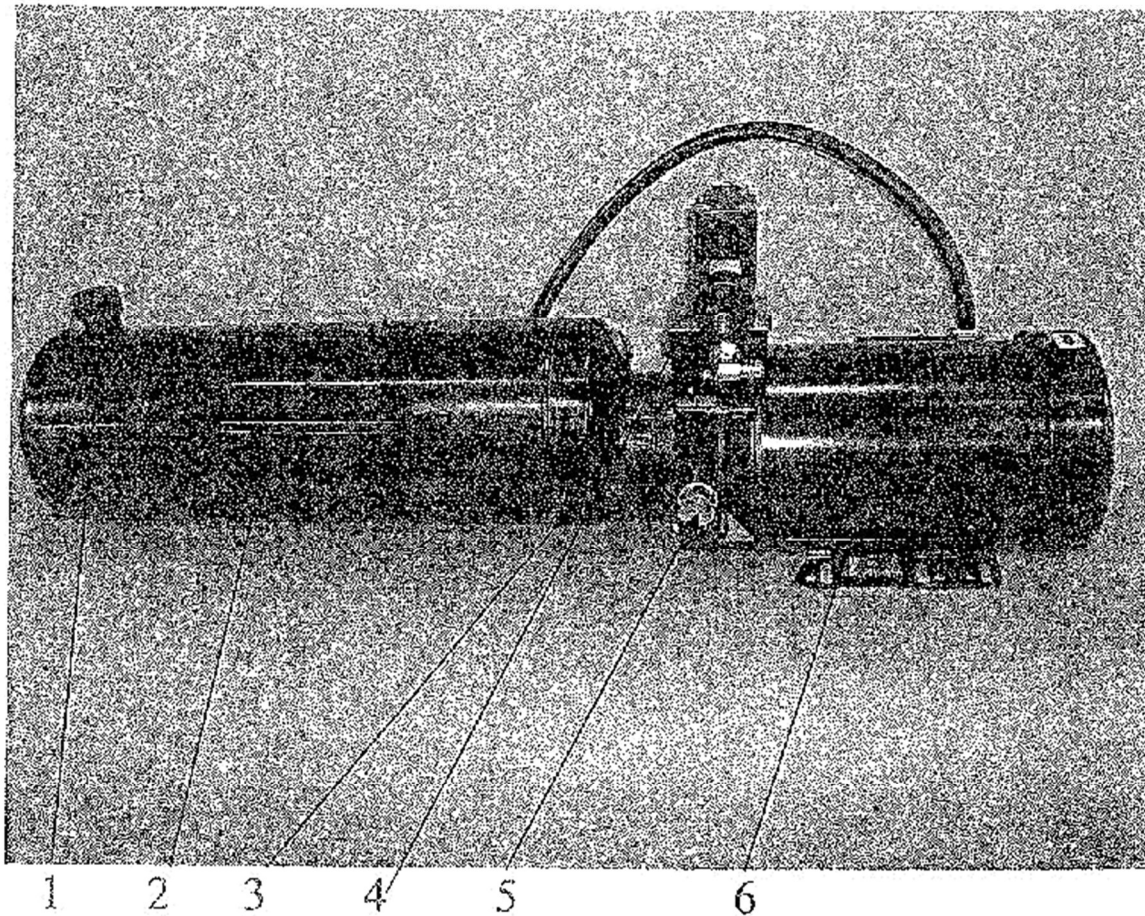
1	Reservoir O-Ring	10	Breather
2	Pump	11	Plug
3	Bolt	12	Bolt
4	Seal Kit	13	Valve Plug 2-way
5	Single Phase AC Motor	14	Plug
6	Bolt	15	Dist. Relief Valve Kit
7	Motor Adaptor	16	Horizontal Plumbing Kit
8	Coupling	17	Filter
9	Reservoir		

# PARTS DRAWING 5354-F3-3003 POWER UNIT



1	Reservoir O-Ring	10	Breather
2	Pump	11	Plug
3	Bolt	12	Bolt
4	Seal Kit	13	Valve Plug 2-way
5	Three Phase AC Motor	14	Plug
6	Bolt	15	Dist. Relief Valve Kit
7	Motor Adaptor	16	Horizontal Plumbing Kit
8	Coupling	17	Filter
9	Reservoir		





### 5354-F3-5003 3HP 3PH POWER UNIT

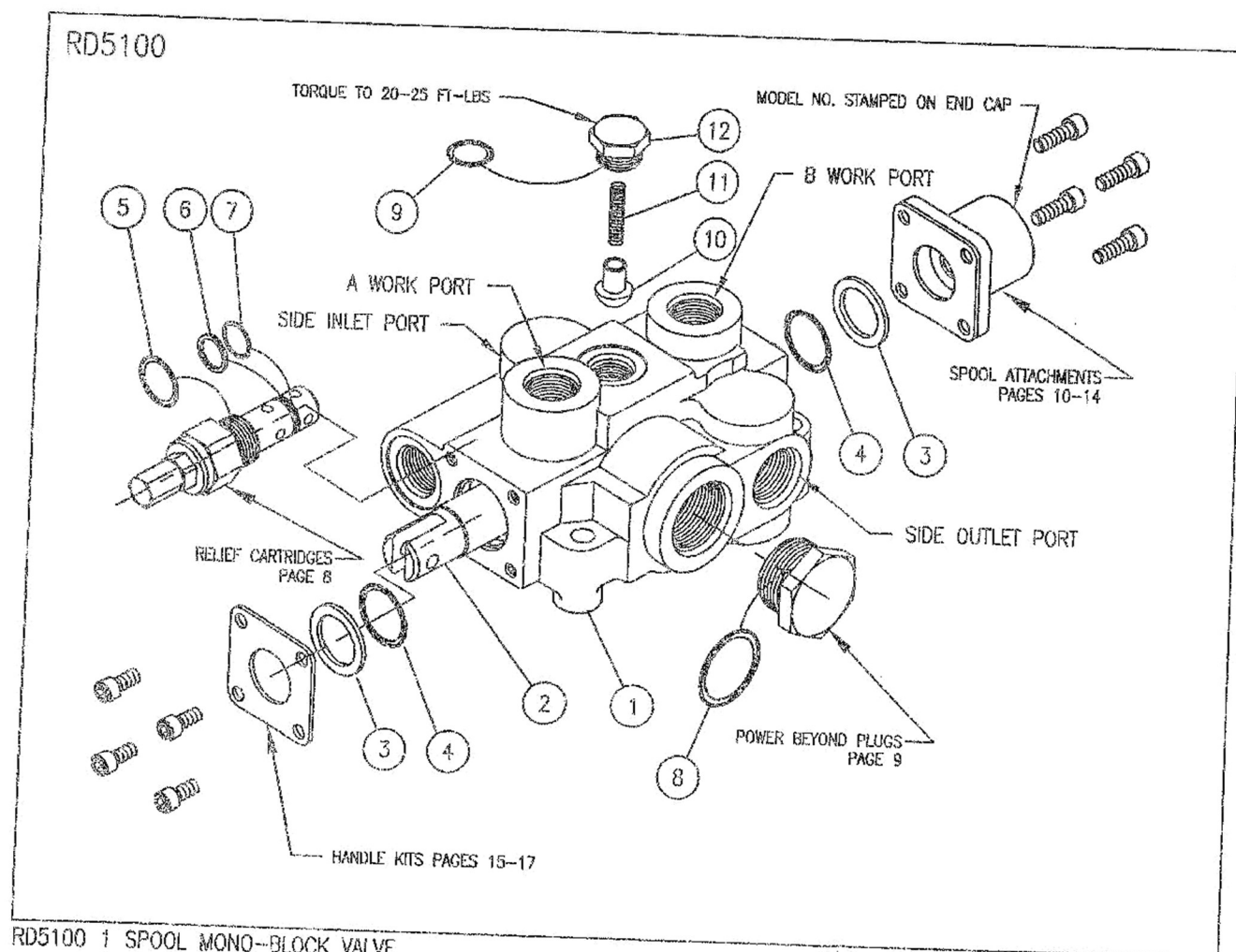
1. 5354-FB-3603 FILLER BREATHER
2. 5354-FE-3018 3 GAL. RESERVOIR
3. 5354-FE-3940 PUMP KP40
4. 3071-00-1509 NACHI VALVE
5. 5354-FE-3023 RELIEF VALVE
6. 5354-FE-3M19 3HP 3PHASE MOTOR

PART#5354-00-2500

APPALACHIAN MACHINE INC | 5304 Laboratory Street | Dublin, VA 24084

Phone: (540) 674-1914 | [info@appalachianmachine.com](mailto:info@appalachianmachine.com) | [www.appalachianmachine.com](http://www.appalachianmachine.com)





## RD5100 1 SPOOL MONO-BLOCK VALVE

ITEM	QTY	PART NO.	DESCRIPTION
1	1		1 SPOOL VALVE BODY
2	1	SEE NOTE 1	SPOOL
3	2	670500010	SPOOL SEAL BACK-UP
4	2	240000213	213 O-RING
5	1	240000116	116 O-RING
6	1	240019015	015 BACK-UP
7	1	240000015	015 O-RING
8	1	240000916	916 O-RING
9	1	240000908	908 O-RING
10	1	670100001	LOAD CHECK POPPET
11	1	670300007	LOAD CHECK SPRING
12	1	671600001	LOAD CHECK PLUG

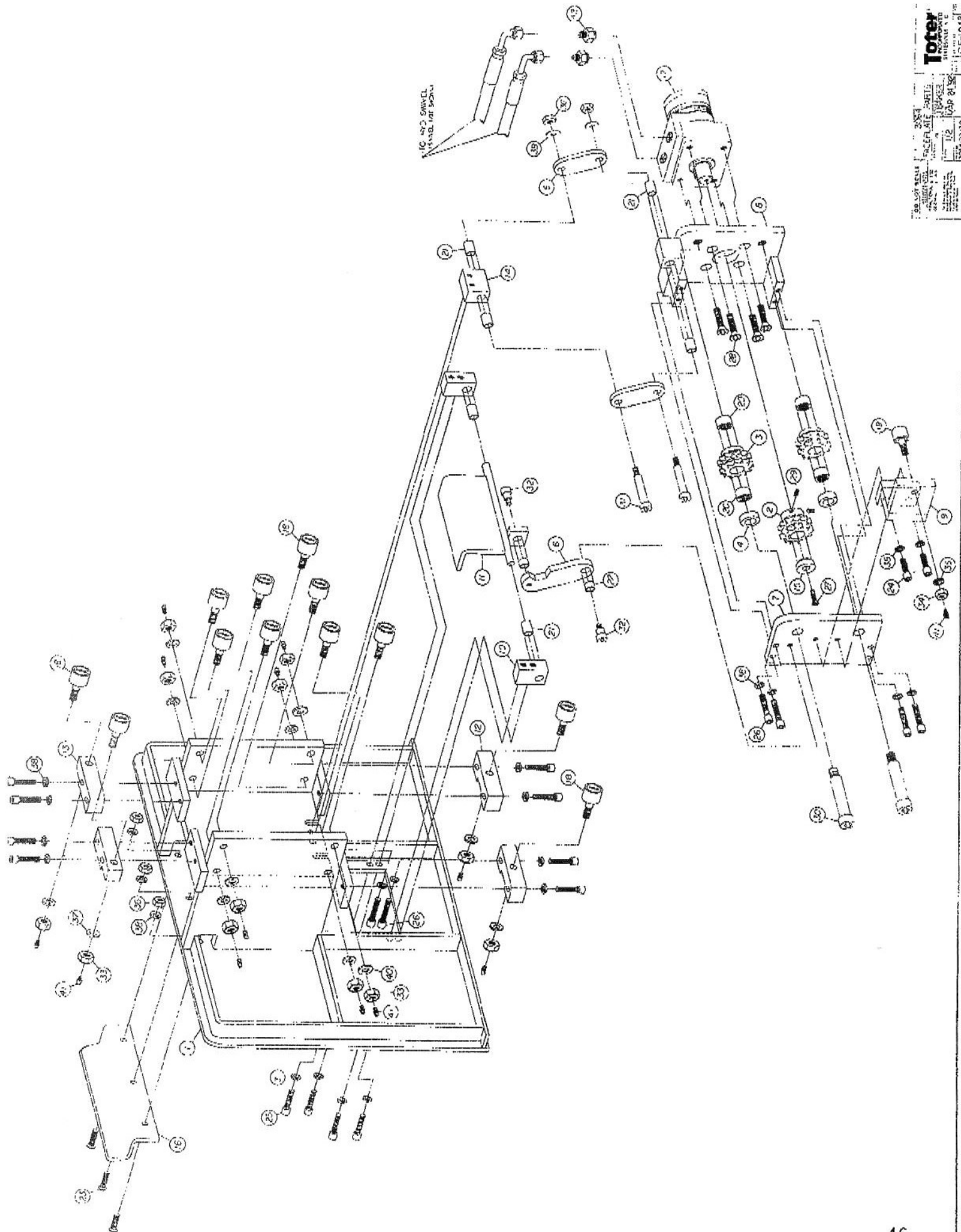
These are matched parts and are not sold separately.

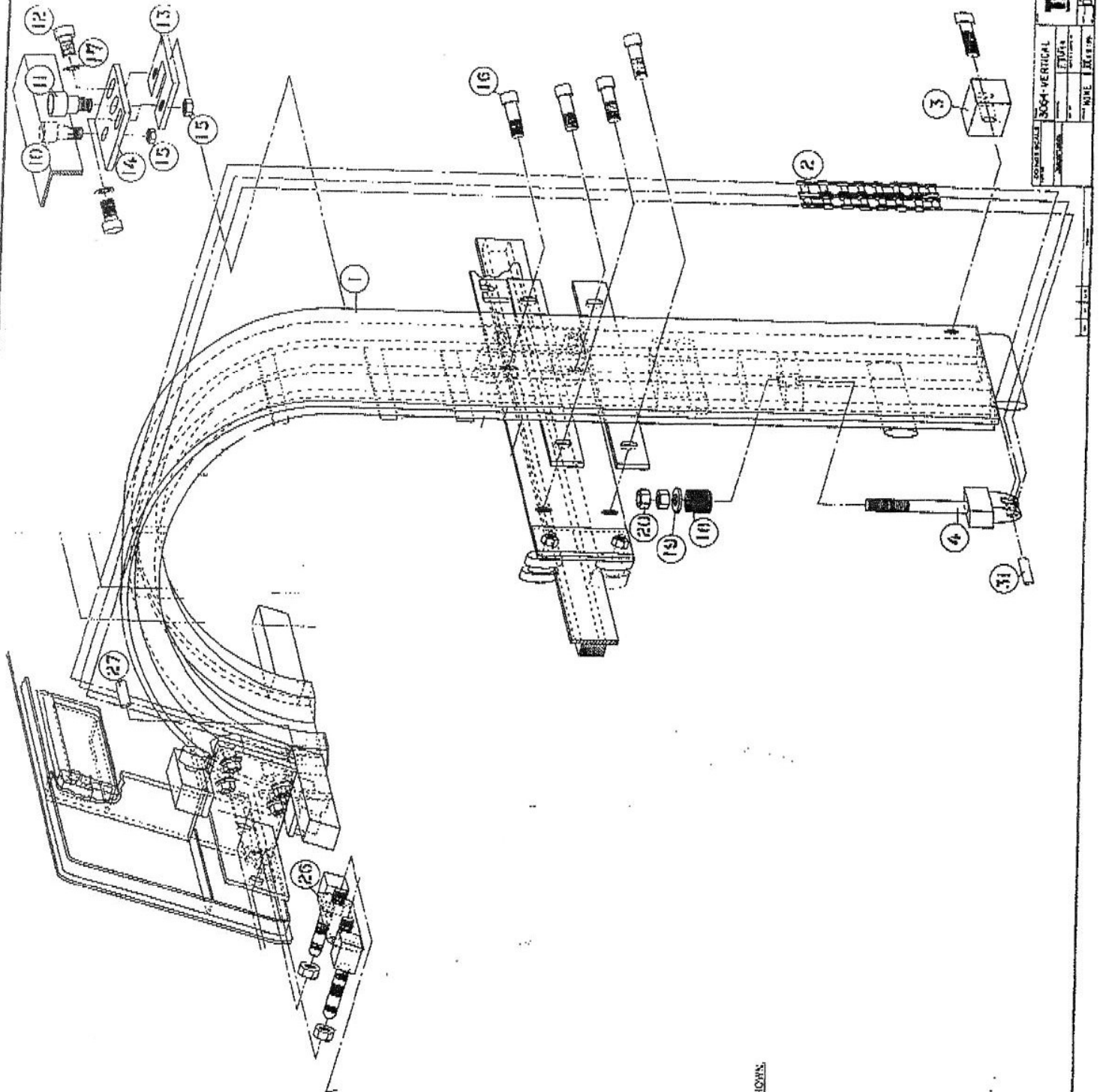
SEAL KIT 660551001 (PLUS OTHERS)

LOAD CHECK KIT, NO. 660150015

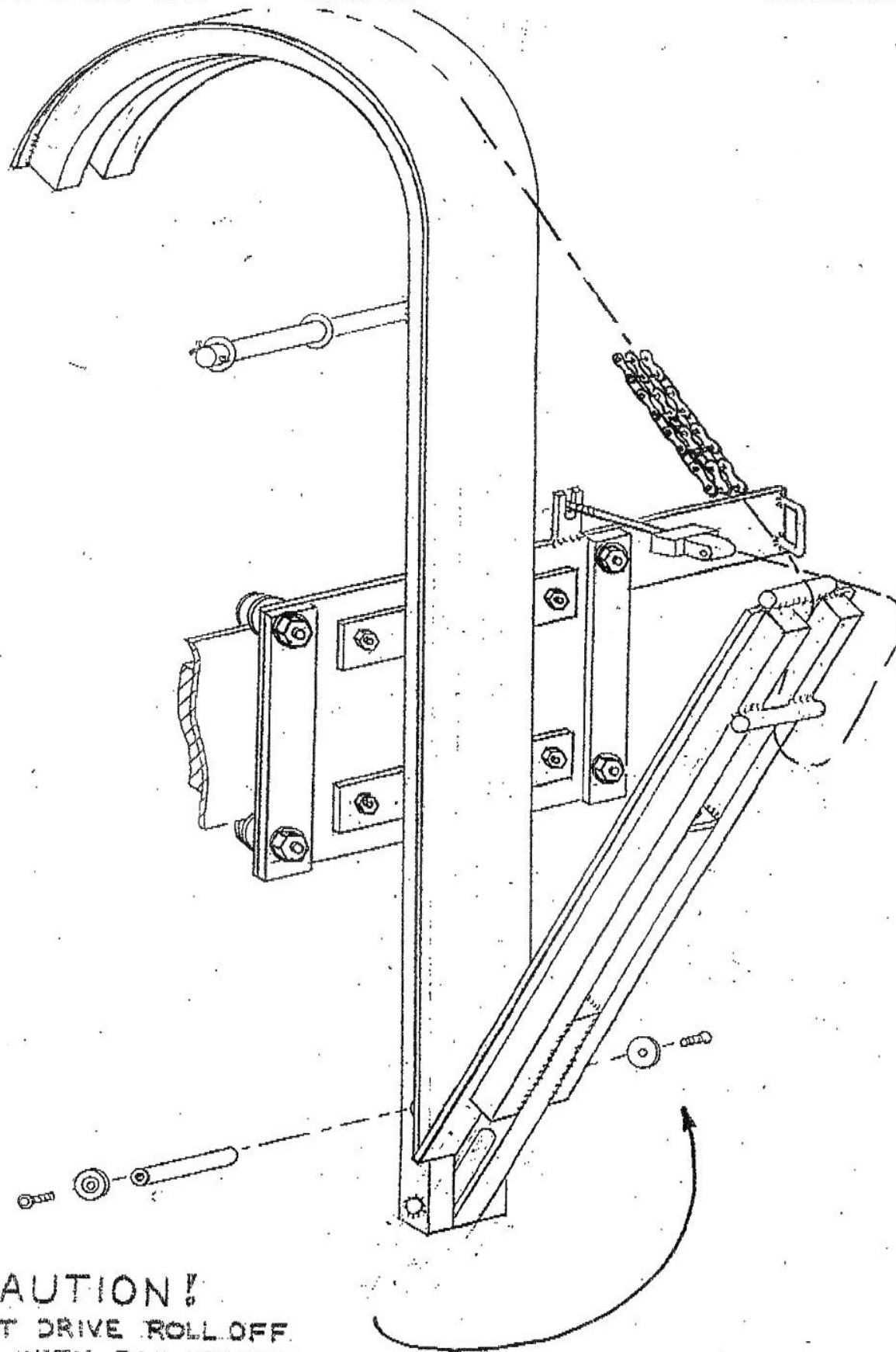
## NOTES:

1. SEE SPOOL IDENTIFICATION CHART ON PAGE 7
2. VALVES WITH 3 WAY SPOOLS HAVE 'A' WORK PORT PLUGGED.





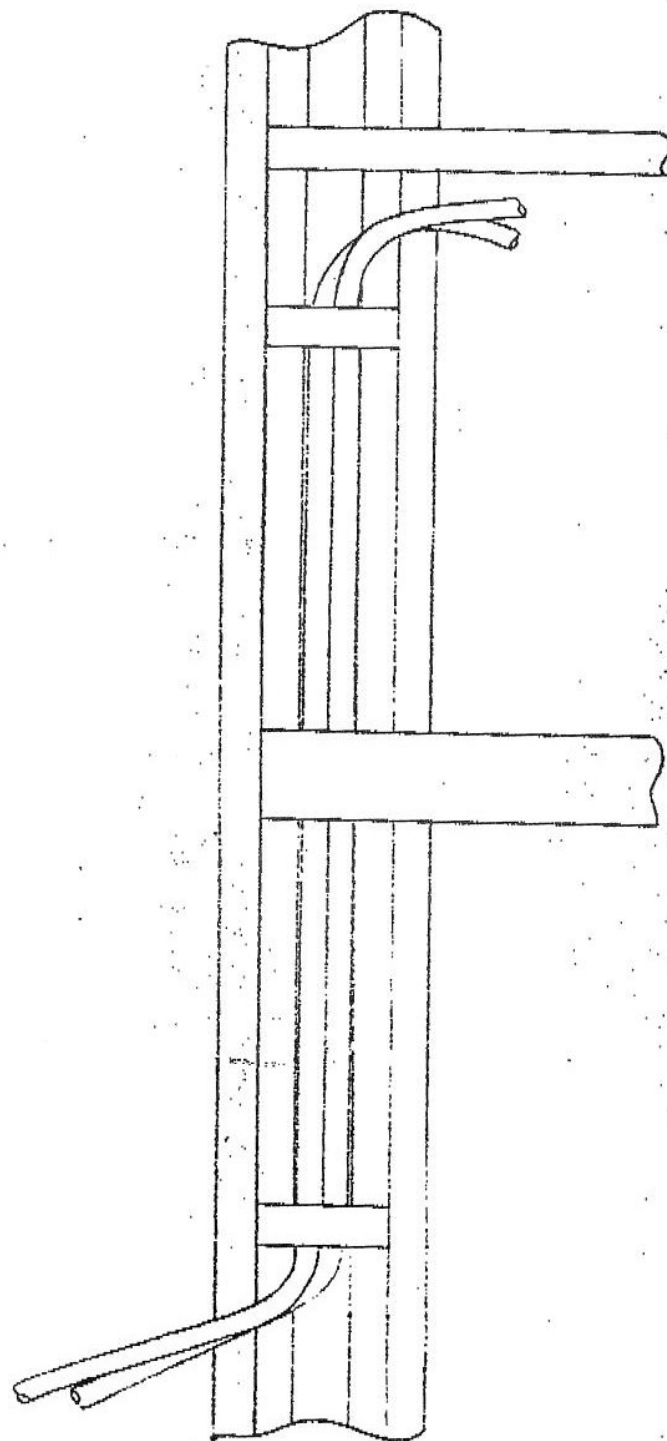
\* NOTE: 304-VERTICAL MOTOR NOT SHOWN



**CAUTION!**  
DO NOT DRIVE ROLL OFF  
TRUCK WITH RAIL HINGED  
UP

DRAWING - VL-1

TOTER VERTICAL LIFT  
HINGED RAIL USED ON ROLL-OFF BOX -  
BREAK RAIL BEFORE SETTING BOX ON  
THE GROUND

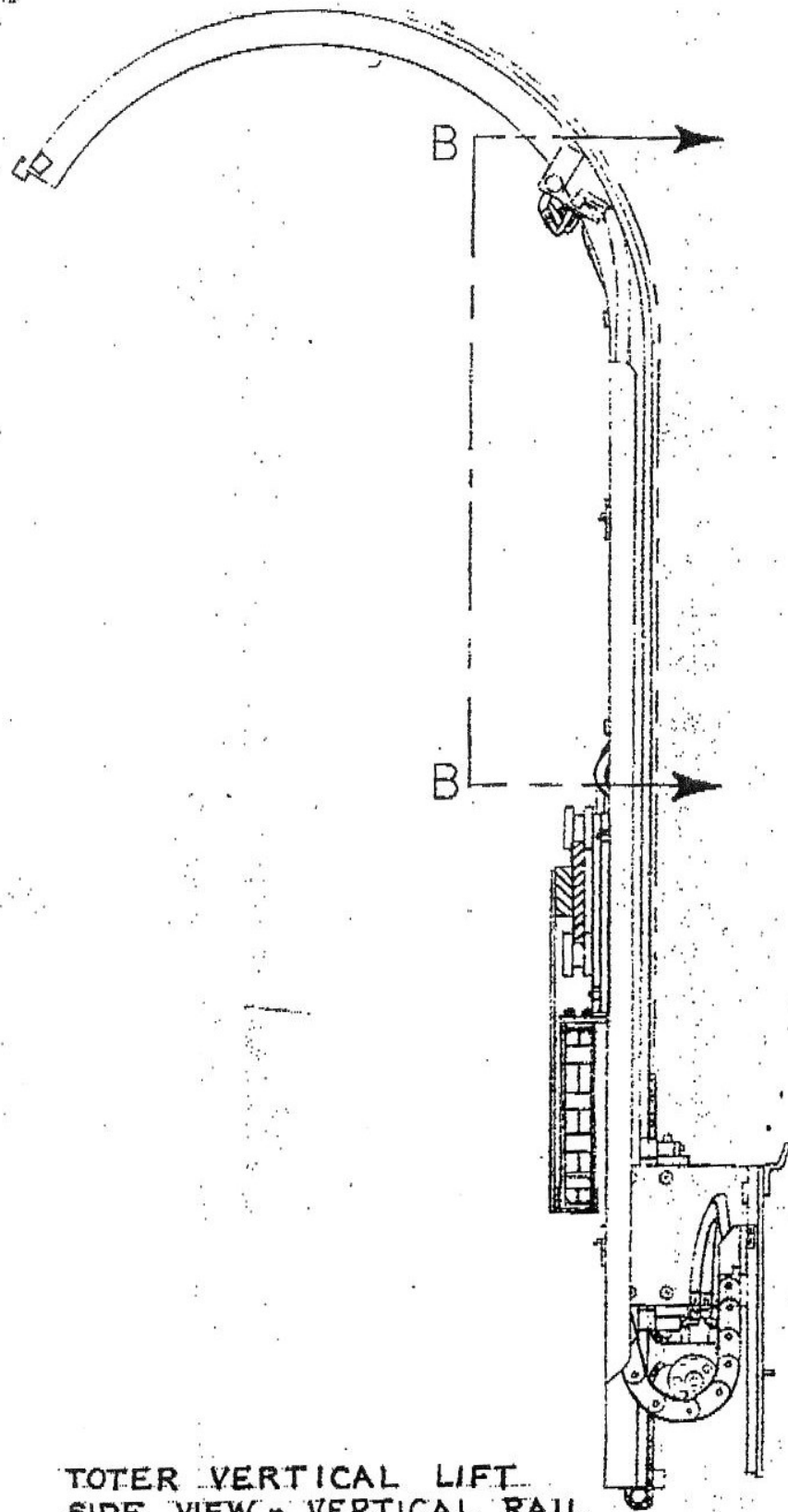


DRAWING VL-2  
(SHEET 2 OF 2)

VIEW B-B  
SCALE 1:4

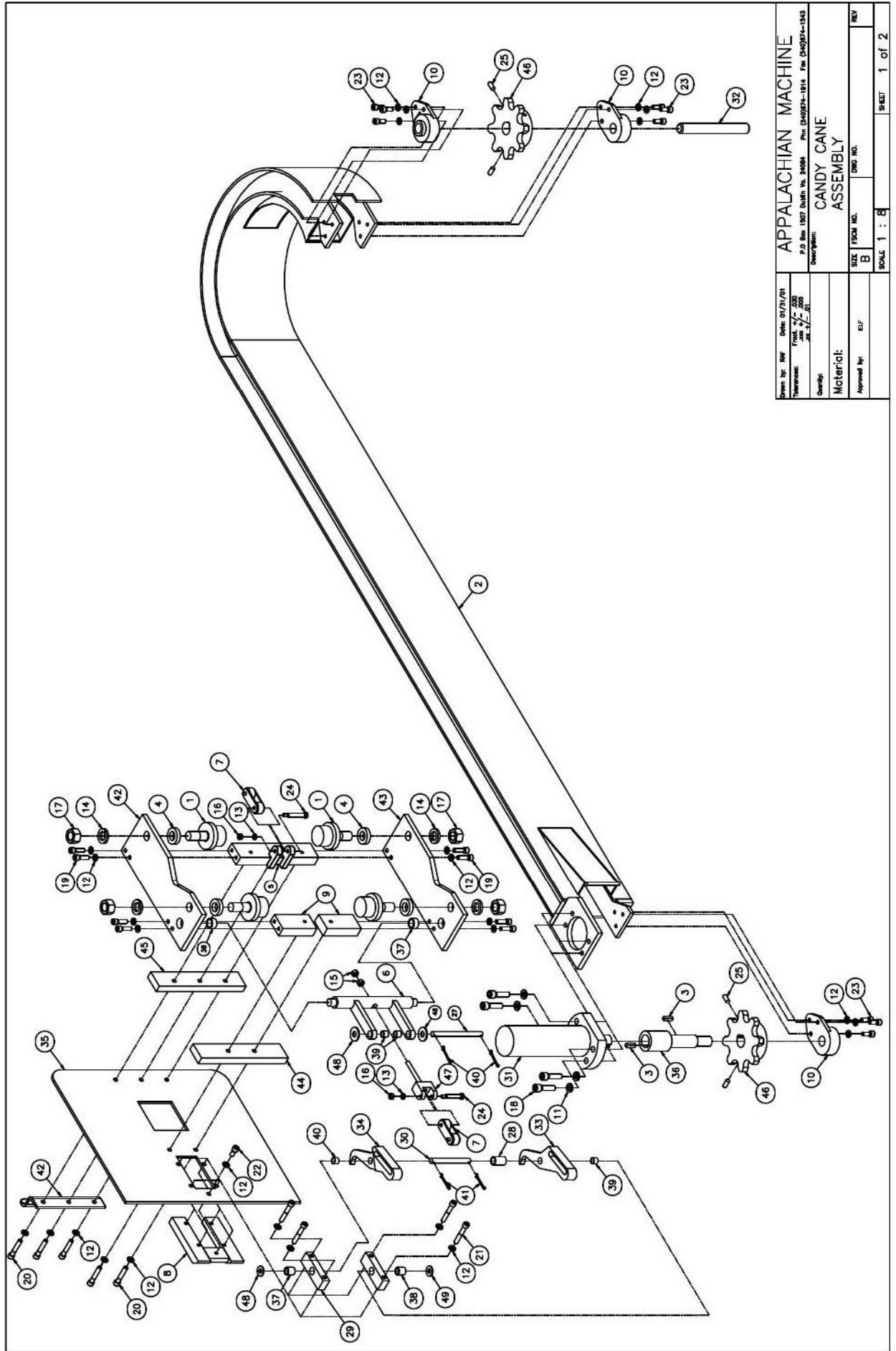
TOTER VERTICAL LIFT  
HOSE ROUTING IN RAIL





DRAWING VL-2  
(SHEET 1 OF 2)

TOTER VERTICAL LIFT  
SIDE VIEW - VERTICAL RAIL



Drawn by: REF	Date: 01/31/01	Appalachian Machine
Reviewed: FORD, J. J.	Date: 02/01/01	CANDY CANE ASSEMBLY
Quantity:		
Material:		
Approved by: ELF		
SIZE: 1/8"	FORM NO.:	DRW NO.:
SCALE: 1 : 1		
		SHEET 1 of 2

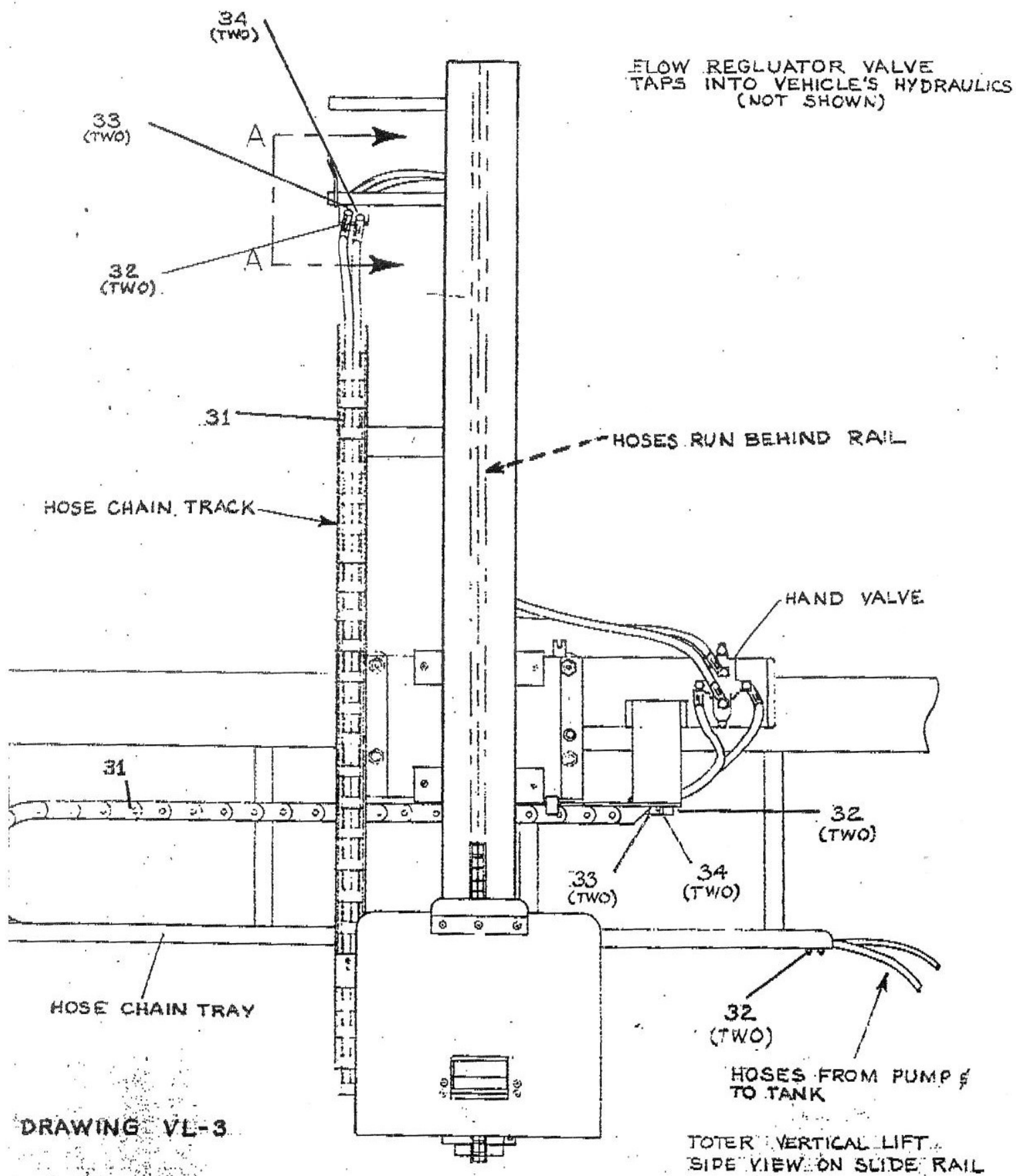
45	2	SPROCKET	3064-00-6020
44	1	SPACER FACE PLATE, TOP	3064-00-6019
43	1	SPACER FACE PLATE, BOTTOM	3064-00-6018
42	2	SIDE PLATE FOR CARRIAGE	3064-00-6017
41	1	SADDLE	3057-00-3900
40	4	COTTER PIN	5110-00-0200
39	2	OILITE BUSHING 5/8" O.D. X 1/2" I.D. X 7/16" LONG	5031-00-0513
38	2	OILITE BUSHING 5/8" O.D. X 1/2" I.D. X 1/2" LONG	5031-00-0512
37	2	OILITE BUSHING 3/4" O.D. X 1/2" I.D. X 3/4" LONG	5030-00-0527
36	2	OILITE BUSHING 1" O.D. X 3/4" I.D. X 1/2" LONG	5030-00-0726
35	1	MOTOR DRIVE SHAFT	3064-00-6016
34	1	MODIFIED FACE PLATE	3064-00-6015
33	1	LOCK HOOK RIGHT	3064-00-6014
32	1	LOCK HOOK LEFT	3064-00-6013
31	1	IDLER SHAFT	3064-00-6012
30	1	HYDRAULIC MOTOR	3077-00-2155
29	1	HOOK PIVOT PIN	3064-00-6011
28	2	HOOK BEARING BLOCK	3064-00-6010
27	1	HOOK ASSEMBLY SPACER	3064-00-6009
26	1	HOOK ACTUATOR PIVOT PIN	3064-00-6008
25	4	HEXAGON SOCKET SET SCREW - CONE POINT 3/8-16UNC X 1" LONG	5590-00-0297
24	2	HEXAGON SOCKET HEAD SHOULDER SCREW - 0.375 X 2 ANSI B18.3	5570-00-0420
23	1	HEXAGON SOCKET HEAD CAP SCREW 3/8-16UNC X 7/8" LONG	5250-00-0412
22	1	HEXAGON SOCKET HEAD CAP SCREW 3/8-16UNC X 3/4" LONG	5250-00-0410
21	1	HEXAGON SOCKET HEAD CAP SCREW 3/8-16UNC X 2 1/4" LONG	5250-00-0460
20	1	HEXAGON SOCKET HEAD CAP SCREW 3/8-16UNC X 2" LONG	5250-00-0428
19	1	HEXAGON SOCKET HEAD CAP SCREW 3/8-16UNC X 1 1/4" LONG	5250-00-0420
18	1	HEXAGON SOCKET HEAD CAP SCREW 1/2-13UNC X 1 3/4" LONG	5250-00-0525
17	4	HEX NUT 7/8-14UNC	5260-00-0900
16	2	HEX NUT 5/16-18UNC	5260-00-0300
15	2	HEX NUT 1/2-20UNC	5260-00-0400
14	4	LOCK WASHER, 7/8"	5440-00-0800
13	2	LOCK WASHER, 5/16"	5440-00-0300
12	27	LOCK WASHER, 3/8"	5440-00-0400
11	4	LOCK WASHER, 1/2"	5440-00-0500
10	3	FB-16, 3 BOLT BEARING	3064-00-6007
9	2	FACE PLATE SPACER	3064-00-6006
8	1	FACE BLOCK WELDMENT	3064-00-4442
7	1	CHAIN	3064-00-6005
6	1	CARRIAGE CHAIN TAKE UP BARS	3064-00-6044
5	1	CARRIAGE CHAIN CONNECTOR	3064-00-6003
4	4	CAM SPACERS	3064-00-6002
3	2	5/16" KEY STOCK	3064-00-6023
2	1	LIFT ASSEMBLY	3064-00-6001
1	4	2IN FLARED CAM FOLLOWER	3064-00-6022

48	2	3/8" WASHER	5500-00-0400
47	2	1/2" WASHER	5500-00-0500
46	1	TAKE-UP ADAPTER	3064-00-6021

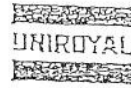
ITEM QTY	NAME	PART NO.
PARTS LIST		

Drawn by: RLF	Date: 01/21/01	APPALACHIAN MACHINE
Reviewed by: RLF	Date: 1/2/01	
Quantity:	1	
Material:	ASSEMBLY	
Approved by: RLF		
SIZE FROM NO.	8	
SCALE 1 : 4		
SHEET 2 of 2		

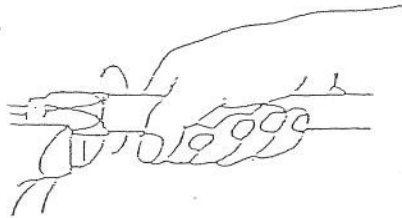




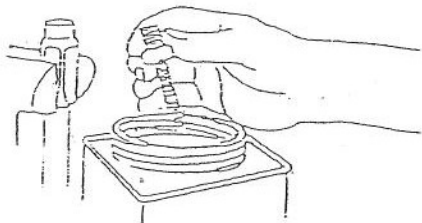
# Assembling Reusable Type Hose Couplings



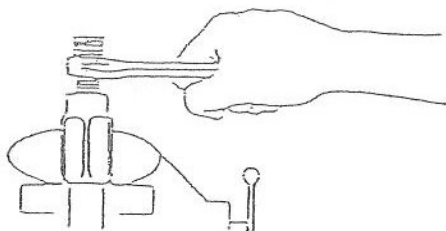
## Non-Skived Hose without a Mandrel



Place socket in vise. Lightly oil and thread hose counter-clockwise into socket until hose bottoms. Back off  $\frac{1}{2}$  turn.

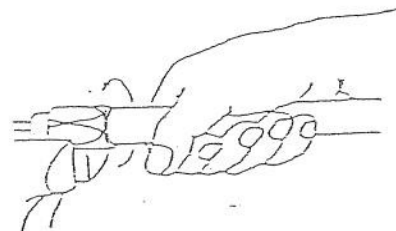


Oil nipple threads and inside of hose with light oil.

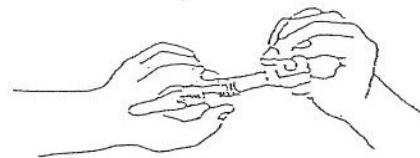


Thread nipple clockwise into socket until nipple hex shoulders against socket.

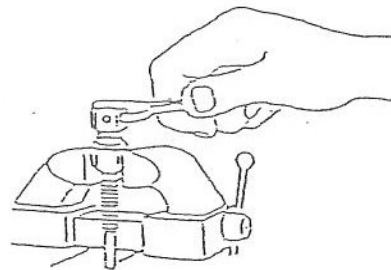
## Non-Skived Hose with a Mandrel



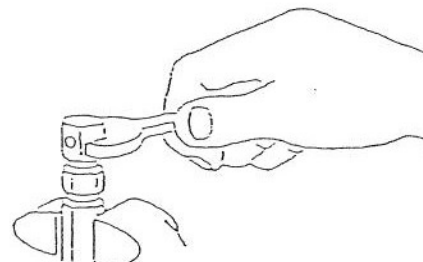
Place socket in vise. Lightly oil and thread hose counter-clockwise into socket until hose bottoms. Back off  $\frac{1}{2}$  turn.



When assembling male pipe ends, slide nipple onto mandrel.



When assembling swivel ends, screw threaded mandrel all the way into interior threads of swivel, wrench tight.



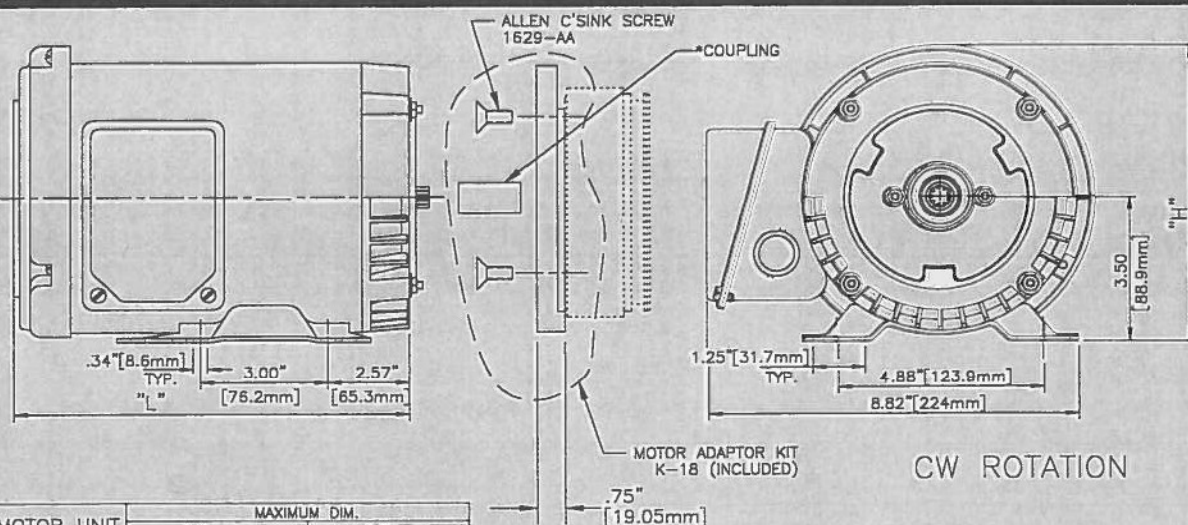
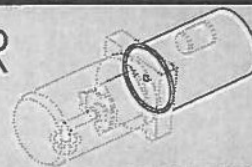
Oil nipple threads and inside of hose with light oil. Push nipple into socket. Male Ends: thread nipple in until it bottoms against socket. Swivel Ends: apply wrench to hex of assembly mandrel. Thread nipple clockwise into socket until clearance between nut and socket is approximately  $\frac{1}{16}$ " to allow nut to swivel. Remove mandrel.



# Fenner

Fluid Power

## DISTRIBUTOR POWER UNIT PROGRAM



MOTOR UNIT	MAXIMUM DIM.	
	"L"	"H"
MC18	11.19" [284.2mm]	7.18" [182.4mm]
MC19	12.50" [317.5mm]	7.18" [182.4mm]
MC20	13.53" [343.6mm]	7.44" [188.9mm]

ALL MOTORS ARE TOTALLY ENCLOSED, FAN-COOLED (TEFC).

MOTORS ARE CONTINUOUS DUTY BUT CAN NOT BE USED ABOVE THEIR RATED HORSEPOWER, REGARDLESS OF DUTY CYCLE, AND MUST HAVE FULL VOLTAGE TO ACHIEVE RATED HORSEPOWER.

\*NOTE: FOR CONTINUOUS APPLICATIONS FENNER RECOMMENDS COUPLING CHANGED EVERY 5,000 HOURS OF USE.

NOTE: FENNER USES A NETWORK OF QUALIFIED SUPPLIERS TO ENSURE AVAILABILITY. THERE ARE MINOR DIMENSIONAL AND COSMETIC DIFFERENCES BETWEEN VENDOR'S PRODUCTS.

FOR FLOWS OVER 3 U.S. GPM (11 LPM), USE 1413-AA FILTER.

PUMP		KP08	KP10	KP12	KP16	KP20	KP25	KP31	KP40	KP50	KP63	KP80
MOTOR												
KMC18 2HP 3450 RPM, 3PH 230/460v 60Hz	.58 GPM	.7 GPM	.91 GPM	1.3 GPM	1.7 GPM	2.2 GPM	2.7 GPM	3.5 GPM	4.4 GPM			
	4300 PSI	3450 PSI	2850 PSI	2150 PSI	1700 PSI	1300 PSI	1000 PSI	750 PSI	500 PSI			
	2.3 LPM	2.7 LPM	3.5 LPM	5.1 LPM	6.6 LPM	8.4 LPM	10 LPM	14 LPM	17 LPM			
KMC19 3HP 3450 RPM, 3PH 230/460v 60Hz	.56 GPM	.62 GPM	.83 GPM	1.2 GPM	1.6 GPM	2.1 GPM	2.6 GPM	3.4 GPM	4.3 GPM			
	5000 PSI	5000 PSI	4300 PSI	3200 PSI	2550 PSI	2000 PSI	1600 PSI	1200 PSI	900 PSI			
	2.2 LPM	2.4 LPM	3.2 LPM	4.8 LPM	6.4 LPM	8.2 LPM	10 LPM	13 LPM	17 LPM			
KMC20 5HP 3450 RPM, 3PH 230/460v 60Hz	.56 GPM	.62 GPM	.79 GPM	1.2 GPM	1.5 GPM	2.0 GPM	2.5 GPM	3.3 GPM	4.2 GPM			
	5000 PSI	5000 PSI	5000 PSI	5000 PSI	4300 PSI	3400 PSI	2700 PSI	2050 PSI	1600 PSI			
	2.2 LPM	2.4 LPM	3.1 LPM	4.5 LPM	6.0 LPM	7.9 LPM	9.8 LPM	13 LPM	16 LPM			

NOT RECOMMENDED

PERFORMANCE AT 45 CST (200 SSU) AND 90% MECHANICAL EFFICIENCY. GPM'S ARE U.S. VALUES.

FAN BLADE  
(KMC18)

CHANGE  
ADDED INCLUDED TO K-18  
(REF: ECO# 970718B)

TITLE  
CONTINUOUS DUTY  
3 PH AC MOTORS

SCALE  
NONE  
REV. E

DRAWN  
MM  
DATE  
12-AUG-97  
CHECK  
DATE  
10-15-97

PAGE 3 OF 4

PART NO.  
KMC

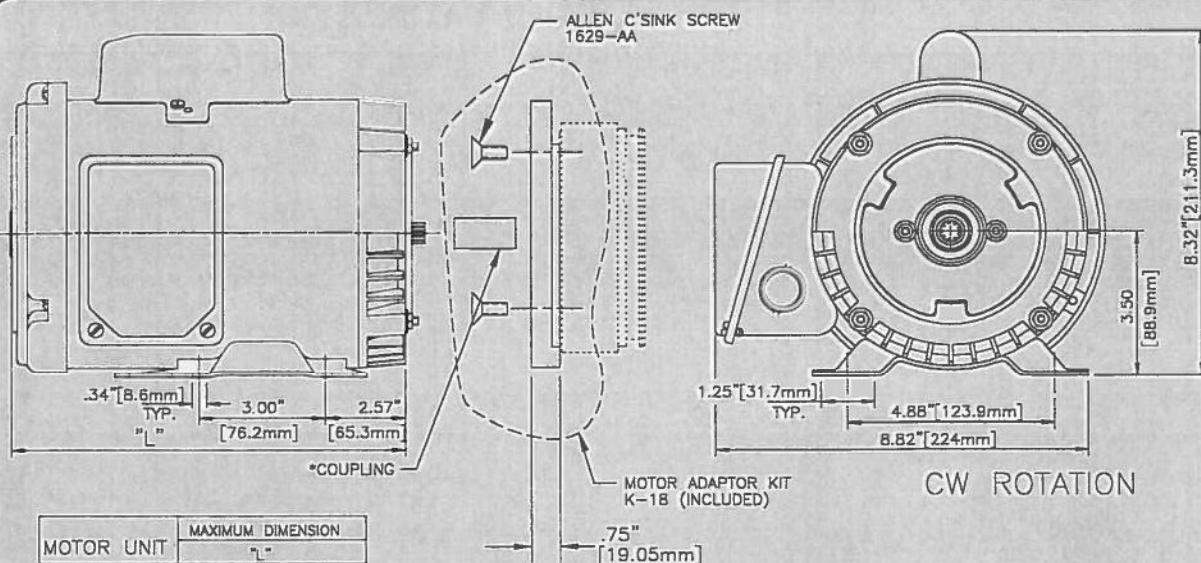
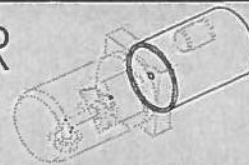
30-6 Amps  
160-3 Amps  
Amps  
230v  
13.6 Amps  
460v  
6.8 Amps



# Fenner

Fluid Power

## DISTRIBUTOR POWER UNIT PROGRAM



MOTOR UNIT	MAXIMUM DIMENSION " L "
MC16	11.19" [284.2mm]
MC17	12.50" [317.5mm]

*KMC17 coupling (1 1/4") 1118-AA*  
*3731-AA (1 1/2")*

ALL MOTORS ARE TOTALLY ENCLOSED, FAN-COOLED (TEFC).

MOTORS ARE CONTINUOUS DUTY BUT CAN NOT BE USED ABOVE THEIR RATED HORSEPOWER, REGARDLESS OF DUTY CYCLE, AND MUST HAVE FULL VOLTAGE TO ACHIEVE RATED HORSEPOWER.

\*NOTE: FOR CONTINUOUS APPLICATIONS FENNER RECOMMENDS COUPLING CHANGED EVERY 5,000 HOURS OF USE.

FOR FLOWS OVER 3 U.S. GPM (11 LPM), USE 1413-AA FILTER.

NOTE: FENNER USES A NETWORK OF QUALIFIED SUPPLIERS TO ENSURE AVAILABILITY. THERE ARE MINOR DIMENSIONAL AND COSMETIC DIFFERENCES BETWEEN VENDOR'S PRODUCTS.

PUMP MOTOR	KP08	KP10	KP12	KP16	KP20	KP25	KP31	KP40	KP50	KP63	KP80
KMC16 1HP 3450 RPM, 1PH 115/230v 60Hz	.65 GPM 2150 PSI 2.5 LPM 150 BAR	.8 GPM 1700 PSI 3.1 LPM 120 BAR	.99 GPM 1400 PSI 3.8 LPM 100 BAR	1.4 GPM 1050 PSI 5.3 LPM 75 BAR	1.7 GPM 800 PSI 6.7 LPM 55 BAR	2.2 GPM 650 PSI 8.5 LPM 45 BAR	2.7 GPM 450 PSI 11 LPM 30 BAR	3.5 GPM 300 PSI 14 LPM 20 BAR	4.4 GPM 200 PSI 17 LPM 14 BAR	NOT RECOMMENDED	
KMC17 2HP 3450 RPM, 1PH 115/230v 60Hz	.58 GPM 4300 PSI 2.3 LPM 300 BAR	.7 GPM 3450 PSI 2.7 LPM 240 BAR	.91 GPM 2850 PSI 3.5 LPM 200 BAR	1.3 GPM 2150 PSI 5.1 LPM 150 BAR	1.7 GPM 1700 PSI 6.6 LPM 115 BAR	2.1 GPM 1300 PSI 8.4 LPM 90 BAR	2.6 GPM 1000 PSI 10 LPM 70 BAR	3.5 GPM 750 PSI 13 LPM 50 BAR	4.4 GPM 500 PSI 16 LPM 35 BAR		

PERFORMANCE AT 45 CST (200 SSU) AND 90% MECHANICAL EFFICIENCY. GPM'S ARE U.S. VALUES.

*ULL APPROVED (USA)* / *CSA APPROVED (CANADA)*

CHANGE ADDED NOTE INCLUDED TO K-18. (REF: ECO# 970718B)	TITLE CONTINUOUS DUTY 1 PH AC MOTORS	SCALE NONE	REV. G
DRAWN MM	DATE 12-AUG-97	CHECK MM	DATE 10-15-97
PAGE 1 OF 4		PART NO. KMC _____	

## NOTES

## NOTES

## NOTES